



WAYNE STATE

College of Nursing

BACHELOR OF SCIENCE IN NURSING STUDENT HANDBOOK | 2018-2019

OFFICE OF STUDENT AFFAIRS
5557 Cass Ave. | Cohn, Suite 10
Detroit, MI 48202

GENERAL INFORMATION

This publication is for informational purposes and is neither a contract nor an offer to contract. The College reserves the right to change any provisions or requirements at any time without notice. This material supplements the *Wayne State University Undergraduate Bulletin* and the *Schedule of Classes* and is not intended to replace these documents.

It is the responsibility of the student to meet and satisfy all University, College and program requirements.

Current until revised:
Last revised 8/13/2018

TABLE OF CONTENTS



OVERVIEW

History	1
Philosophy	1
Mission, Vision, Values	2
College of Nursing Administrative Structure	3
Office of Student Affairs	4

ACADEMICS

Academic Regulations	5
Definition of Terms	5
Scholarship	5
Probation	6
Exclusion	6
Appeal Rights	6
Attendance	6
First Day of Class	6
Travel Requirements	7
Examinations	7
Final Examinations	7
Other Examinations of Assessments	7
Evolve Learning System	7
Missing an Exam	7
Eligibility for Make Up Exam	7
Special Circumstances	7
Documentation of Special Circumstances	8
Residency Requirement	8
Graduation with Distinction	8
Dean's List and Honors List	8
Students' Rights and Responsibilities	8
Time Limitations	9
Authorized Leave of Absence	9
Mark of "I" – Incomplete	9
Withdrawal from Nursing Courses	10
Grading Scale – Undergraduate	10
Re-Entry into the College of Nursing After First Failure	10
Readmission after an Absence of More than One Academic Year	11
Senior Year Audit	11
Licensure Preparation	11
Student Consent to Recording	12
HESI Exit Exam	12
Live Review	12

CURRICULAR DESIGNS

B.S.N. Direct Admit for Freshmen Pathway	13
Traditional B.S.N. Pathway	15
B.S.N. Second Career/ Degree (CD2) Pathway	17

REQUIREMENTS FOR THE CLINICAL EXPERIENCE

General Requirements	19
ACEMAPP	19
Health Clearance	19

BLS for Healthcare Providers	19
Liability Insurance	19
Health Insurance	19
Criminal Background Investigation	20
Urine Drug Screen	20
Influenza Vaccination	20
Check List for Clinical Requirements	21
Clinical Attire	21
Uniform	21
ID Badge	21
Clinical Placements	21
Clinical Attendance Policy	22
“No-call, No-show”	22
Punctuality	22

STUDENT INJURY POLICY

University-Authorized Medical Facilities	23
Procedure	23
Bloodborne Pathogen Exposure Plan	24

ESSENTIAL QUALIFICATIONS OF CANDIDATES FOR THE UNDERGRADUATE NURSING PROGRAM

Required Skills and Abilities	25
Motor Skills	25
Sensory/Observation	25
Communication	25
Cognitive	25
Behavior/Emotional	25
Professional Conduct	25
Accommodations for Disability	26

COLLEGE OF NURSING RESOURCES

Nursing Skills Labaoratory	27
Physical Assessment Learning Laboratory	27
Office of Health Research	27
Simulation Lab	27

FACULTY AND STUDENT RESPONSIBILITIES

Responsibilities of Faculty Members	28
Responsibilities of Students	29
University Guidelines for Working with Disruptive or Distressed Students	29

COLLEGE OF NURSING ACADEMIC APPEAL POLICY

Basic Principles	31
Appeal of Grade	31
What Can be Appealed	31
Grade Appeal Process	31
Steps to Initiate Formal Appeal	32
Appeal of Exclusion for Unsafe or Unprofessional Behavior	32
Basic Principles	32
Procedure for Unsafe Behaviors in Clinical Setting	34
Appeal Process for Exclusion for Unsafe Practice in Clinical Setting	35

Other College of Nursing Appeals for Exclusion based on Academic Performance or Misconduct	36
Steps to Initiate a Formal Appeal	36

STUDENT CODE OF CONDUCT

Preamble	37
Definitions	37
Proscribed Conduct	38
Prohibited Conduct	39
Disciplinary Sanctions	40
Communication of Notice	41
Interim Suspension	42
Hearing Committee Panels	42
Student Conduct Officer	43
Preliminary Procedure	43
Fact Finding Procedure	45
Procedure in Non-Academic Misbehavior Cases	46
Procedure in Academic Misbehavior Cases	47
Informal Disciplinary Conference	48
Hearing Procedures	48
Hearing by Committee	50
Student Organizations	50
Appeal Process	51
Inherent Authority	51

GRADUATION

Degree Requirements	52
Application for Degree	52
Commencement	52
Convocation	52
College of Nursing Pins	52
Graduation with Distinction	53

STUDENT SERVICES

University Resources	54
Academic Success Center	54
Athletics	54
Campus Bookstore (Barnes & Noble)	54
Career Services	54
Cashier's Office	54
Campus Health Center	54
Computer and Information Technology (C&IT)	54
Counseling and Psychological Services (CAPS)	55
Dean of Students Office	55
Dining Services	55
Educational Accessibility Services	55
Office of Equal Opportunity	55
Grosberg Religious Center	55
Housing & Residential Life	56
Office of International Students and Scholars (OISS)	56
Ombuds Office	56
Parking and Transportation Services	56
Public Safety – Wayne State Police Department	56
Recreation and Fitness Center, Mort Harris (RFC)	56
Office of the Registrar	56

The South End - Student Newspaper	57
Office of Student Financial Aid	57
Student Accounts Receivable	57
Student Center	57
Student Printing/Coping/Scanning	57
Testing, Evaluation, and Research Service	57
Theatre & Dance at Wayne	57
Transfer Student Success Center	57
University Advising Center (UAC)	58
University Library System	58
Office of Military and Veterans Academic	58
Excellence WSU OneCard	58
College of Nursing Services	58
Financial Aid Distribution	58
Mailboxes	59
Bulletin Boards	59
Student Organizations	59
College of Nursing Council (CNC)	59
Student Nurses Association (SNA)	59
CON Standing Committees Student Representation	59
Committee on Diversity	59
Curriculum Committee	60
Evaluation Committee	60
Scholastics Policy and Admissions Committee (SPA)	60
Student/Faculty Advisory Committee	60
Additional Organizations	60
Chi Eta Sorority, Inc	60
Sigma Theta Tau	60



HISTORY

The Wayne State University College of Nursing began in 1930 as one of the departments of the College of Liberal Arts. During the first fifteen years, the nursing programs became so varied, the enrollment so large, and the contribution to the total community so important that reorganization was necessary. In 1944, at the request of the College of Liberal Arts, the Board of Education authorized the establishment of the Wayne University College of Nursing. The College began to function as one of the components of the University in the spring of 1945.

In 1947 under the leadership of Katharine Faville, the College's first dean, the faculty assumed full responsibility for teaching clinical nursing courses. This was the first time the shifting of clinical teaching from hospital staff to nursing faculty was initiated. This model has now been incorporated by colleges and schools of nursing nationwide. Graduates from the program were eligible to take the Michigan examination for the registered nurse license.

Since 1945, the College has offered programs leading to the degree of Master of Science in Nursing. These programs offer advanced practice preparation for nurse practitioners and clinical nurse specialists.

In 1975, the College developed a Doctor of Philosophy in Nursing.

In 2008, the College established the Doctorate in Nursing Practice.

PHILOSOPHY

The College of Nursing functions within the context of Wayne State University and supports the central goals and mission of the University. These goals are to nurture the intellectual abilities of students and faculty and to provide education, research, and community service. As an urban university, Wayne State accepts responsibility for a reciprocal partnership with the community, using resources and knowledge in dealing with urban life.

Nursing is an academic discipline and profession. As a discipline, nursing develops its body of knowledge using research as the major mode of discovery and validation. The scholarly environment of the university enhances the research and theory development endeavors of the College of Nursing. As a profession, nursing uses knowledge creatively in response to the health care needs of society. Experience in a variety of clinical settings is the primary mode for the development of practice competencies. The urban context of the University provides a setting for exploring the application of knowledge to professional nursing practice.

The concepts that order the discipline and profession of nursing are derived from knowledge about human beings, health care, and environment. These concepts give identity to professional nursing practice, direct inquiry, and theory development.

The College of Nursing supports the importance of liberal arts, humanities, and sciences. Faculty believes that programs designed for the preparation of nurses must be composed of the intellectual, social, and technical components of a liberal and professional education that are available to students within an institution of higher learning. Faculty affirms the necessity and value of clinical practice within a professional nursing program.

The faculty believes that learners are self-directed and actively participate in the learning process. Self-direction encourages the development of personal goals and values significant to the profession of nursing. Knowledge acquisition, capacity for critical inquiry, reflection and decision making prepare

learners to respond to issues that confront them as professionals. Learners from diverse backgrounds enter the College of Nursing to begin or continue their education within the academic discipline of nursing. Faculty believes that the diverse characteristics of its students add to the richness of the learning experience. The program seeks to accommodate the special needs, interests, and abilities of the students. The faculty supports the right of students to question, challenge, and debate within the context of inquiry as an essential ingredient in the students' development. Continuing evaluation on the part of students and faculty is essential to sustain the integrity of the program.

The faculty of the College of Nursing, as members of the academic community, recognizes that its professional functions extend beyond contributions to formal teaching. Research, practice, and community service are also expectations of the faculty role. The faculty views as essential academic freedom, shared governance, opportunity to develop knowledge, and responsibility to incorporate new knowledge into teaching and nursing practice. The faculty assumes responsibility for enhancing the image of the College of Nursing and the University locally, nationally, and internationally through various avenues including research, scholarship, practice, consultation, and participatory decision making.

MISSION STATEMENT

The mission of the College of Nursing is to create and translate knowledge and to educate a diverse student body prepared to excel as clinicians, scholars, and leaders who improve health in local and global communities.

VISION

The College of Nursing will be the leader in nursing research and education, known for our commitment to and impact on urban health.

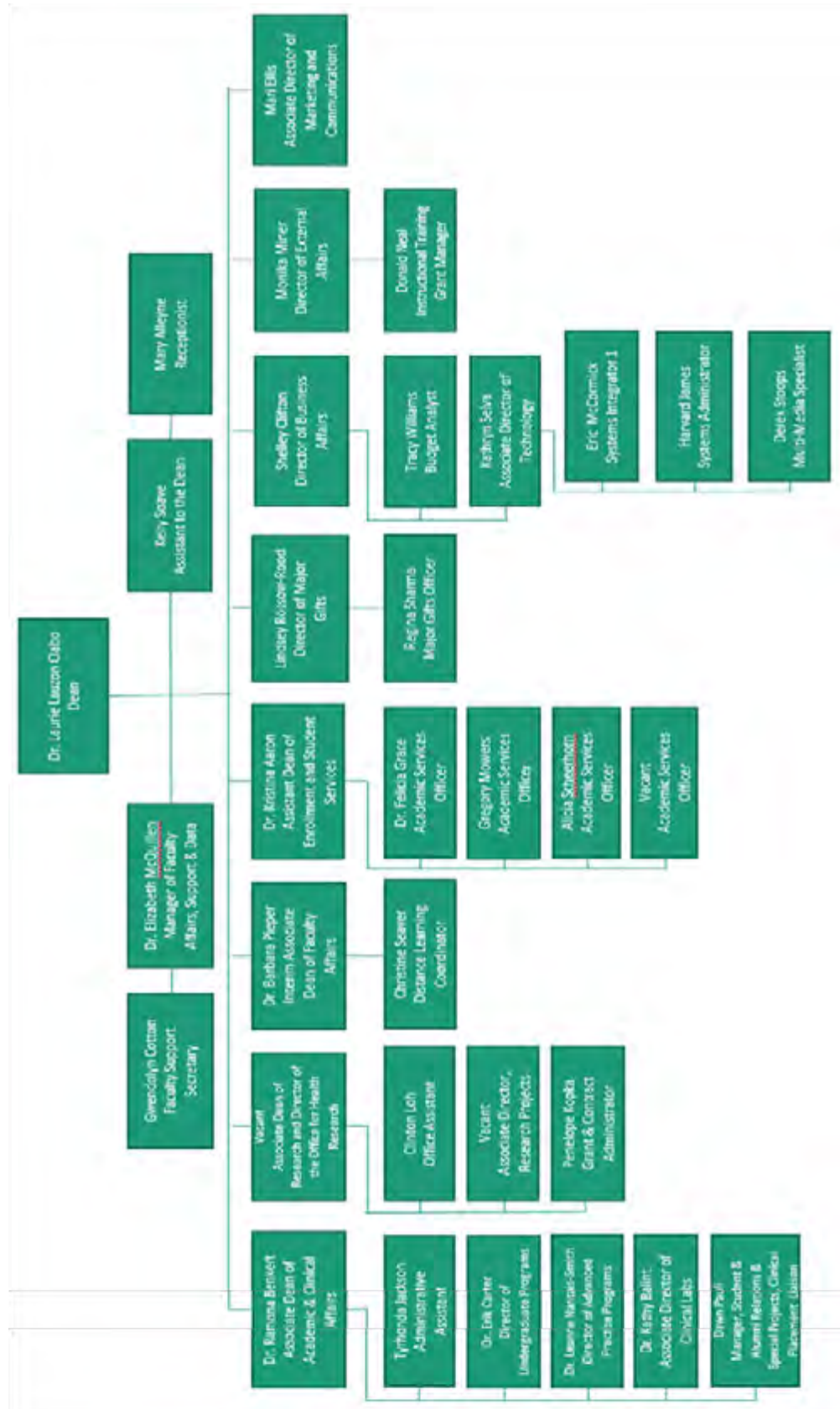
VALUES

As the College of Nursing, we commit to the values of Wayne State University. While our vision and mission show where we want to go, our values guide us on the way. Our values bind us culturally and permeate our strategic and tactical initiatives. They are the defining traits of the Wayne State community.

- **Collaboration:** When we work together, drawing upon various talents and perspectives, we achieve better results.
- **Integrity:** We keep our word, live up to our commitments and are accountable to ourselves and each other.
- **Innovation:** We are unafraid to try new things and learn by both failure and success.
- **Excellence:** We strive for the highest quality outcomes in everything we do.
- **Diversity and Inclusion:** We value all people and understand that their unique experiences, talents and perspectives make us a stronger organization and better people.

Adopted by College of Nursing Faculty Association September 16, 2015

COLLEGE OF NURSING STRUCTURE



OFFICE OF STUDENT AFFAIRS

College of Nursing - Office of Student Affairs (OSA)

(313) 577-4082, toll free (888) 837-0847

E-mail: nursinginfo@wayne.edu

Cohn Building, Suite 10

FAX: (313) 577-6949

website: www.nursing.wayne.edu

The Office of Student Affairs (OSA) is responsible for a variety of activities, including recruitment, admissions, orientation, retention, academic support, and undergraduate academic advising. The Office also manages the admissions, enrollment, registration, financial aid and the scholarship programs of the College of Nursing.

ADMINISTRATION	Areas of Responsibility
<p>Dr. Kristina Aaron Assistant Dean, Enrollment & Student Services Office of Student Affairs kaaron@wayne.edu</p>	<ul style="list-style-type: none"> • Administrative Responsibility for the Office of Student Affairs
ACADEMIC STAFF	
<p>Dr. Felicia Grace Academic Services Officer IV fgrace@wayne.edu</p>	<ul style="list-style-type: none"> • Admission for CD2 & RNBSN Programs • Advisor to CD2 students • Advisor to BSN for Veterans pathway • Advisor to RN to BSN students • Admission for MSN Programs
<p>Alicia Scheerhorn Academic Services Officer II alicia.scheerhorn@wayne.edu</p>	<ul style="list-style-type: none"> • Admission for DNP Program • Admission for PhD Program • NFLP Advisor
<p>Gregory Sikora Mowers Academic Services Officer II sikora.mowers@wayne.edu</p>	<ul style="list-style-type: none"> • Admission for Traditional BSN Program • Admission for Direct Admit for Freshmen Program • Advisor to Traditional BSN students • Advisor to Direct Admit for Freshmen students
<p>Vacant Academic Services Officer II</p>	<ul style="list-style-type: none"> • Recruitment and Admission for the College of Nursing • Advisor to Direct Admit for Freshmen - Workforce Diversity Students



ACADEMIC REGULATIONS

The College has high standards for academic achievement and professionalism. Students are expected to meet these standards of excellence. The following policies must be adhered to for students to progress toward degree completion.

Definition of Terms

Professional Course	Any course required in the professional nursing curriculum
Satisfactory Grade	A grade of "C" (2.00) or better
Unsatisfactory Grade	A grade below "C" (2.00), or a mark of "WF"
Probation	A restricted status in the nursing program
Exclusion	The student has been removed from the program may not register in the nursing courses (To continue taking courses at Wayne State University the student must complete a change of college form with Undergraduate Advising)

Scholarship

1. All students must maintain a satisfactory (2.00) honor point average (h.p.a) in both (a) cumulative grades (general education and nursing); and (b) professional courses.
2. A grade below "C" (2.00) in a professional nursing course is unsatisfactory for progression. Students must achieve a 2.00 g.p.a. in each professional nursing course. A student may not continue in subsequent courses for which the failed course is a prerequisite until a minimum of 2.00 has been achieved. NUR 2010, 2030, 2060, and 2995 are pre (or co) requisites for 2050. NUR 2050 is a pre (or co) requisite for all other clinical based courses. NUR 3010 and 3020 are prerequisites for NUR 4050. There are no other absolute stops (i.e. could fail NUR 3010 and take NUR 3020).
3. Traditional students are able to take courses offered to the CD2 students based on available space in the courses. For example, NUR 4010 and NUR 4020 are offered in the summer for the CD2 students but a traditional student can elect to take these courses in the summer if a slot is available. Likewise, a traditional student can elect to retake a failed course with a class of predominantly CD2 students if a slot is available. If there are more applicants than available spots, a lottery will be held to fill available spaces.
4. Students may apply to repeat a nursing course only once to raise the grade to the 2.00 level or above.
5. A maximum of one nursing course within the program may be repeated.
6. No nursing course for which a student has received a passing grade may be repeated without written approval of the Associate Dean for Academic and Clinical Affairs.
7. A student receiving a "C-" (1.67) grade or less in either the theory or the clinical portion of any nursing course will have recorded no higher than a "C-" (1.67) for the total course and will be required to successfully complete the re-entry process to repeat the course before progressing to the next clinical course.

8. The mark of "I" is appropriate if the student encounters a catastrophic situation which prevents completion of the final requirements of a course. The mark of "I" is not appropriate for unsatisfactory scholastic performance. In the event a mark of "I" is given, the time limit for completion will be determined by the instructor, but may not exceed one year. In the event the mark of "I" is received for a prerequisite course, the "I" must be removed prior to enrollment in the subsequent course. After one year, if the incomplete is not completed, the grade will automatically change to an "F" (failure) and be treated as a failing grade.

Probation

Probation status is a warning to a student to improve his/her academic performance in order to remain in the program.

1. A student is placed on professional probation if he/she does not maintain a minimum grade point average of 2.00 in professional nursing courses.
2. The professional nursing course grade must be returned to a minimum of 2.00 to remove probationary status. Probationary status must be removed within one calendar year; and students on probation are not eligible to represent the College in any student activity.

Exclusion

A student will be excluded from the College if any of the following conditions occur:

1. Failure to satisfactorily complete a nursing course after two attempts;
2. Failure of more than one professional nursing course;
3. Failure to remove probationary status within one calendar year;
4. Failure to meet any special conditions required by the College Scholastic Policy and Admissions (SPA) Committee for the student's continuation in the program.
5. Failure to complete the program within the time limitations outlined in the sections that follow, unless granted an extension by the SPA Committee.
6. Unsafe or unprofessional behavior. (See policy on page 33.)

Appeal Rights

Any student who has been excluded from the College of Nursing due to one of the foregoing reasons has a right to appeal that exclusion pursuant to the same procedures that are set forth in the Academic Appeals process.

Attendance

Regular punctual attendance in classes and clinical practice is expected. Students should notify the instructor if they are unable to attend class or clinical. It is imperative that students maintain a perfect or near-perfect attendance record. Tardiness and/or failure to report to class can result in a lowering of the final course grade or exclusion from the course. Students who feel that their absence is related to extenuating circumstances must discuss this with the faculty of record for the course. If students have a medical issue, they are not required to reveal medical information, however, they may be asked to provide a doctor's note indicating the necessity of the absence.

First Day of Class | Due to the nature of clinical courses and time requirements, first day class attendance is MANDATORY. Unexcused absences from the first day of any course may result in an administrative withdrawal for the student for that class and could delay progression in the program. If a student is removed from a class for non-attendance, clinical space in the subsequent class offering is not guaranteed.

Travel Requirements | It is the responsibility of the student to make all travel arrangements necessary to complete degree requirements. This includes travel arrangements required by clinical agencies.

EXAMINATIONS

Final Examinations

Final examinations for courses are offered on two occasions only; the day the University sets as the final, and usually the Wednesday immediately following the final. The College will make no other arrangements for final examinations. If a student misses both of the examinations due to circumstances covered by the Special Circumstances Rule, an incomplete (I) grade for the course will be given. The student will have 12-months to convert the I-grade into a passing grade (A to C). If the course is a clinical, the College will make every effort to enable the student to take the next offering of the course, subject to availability. However, the College makes no guarantees when a place will become available.

Other Examinations or Assessments (e.g. Mid-terms)

The regulations for other examinations will be specified in the course syllabus. However, the regulations for notifying the College of missing an examination and the need to fulfill the Special Circumstances Rule to take a make-up examination will still apply.

Evolve Learning System

The Evolve Learning System is an educational software package that is integrated into the Nursing curriculum. It consists of tutorials, reviews, and nursing specialty assessments that will be included in certain courses. In the event that required Evolve assessments are not completed as required in the syllabi, the student will receive an incomplete (I) grade for that assignment/course unless stated otherwise in the course syllabus. The student will have 12-months to convert the I-grade into a passing grade (A to C). While carrying an I-grade the student will not be permitted to progress in their studies.

Missing an Examination

It is the students' responsibility to contact the faculty of record within 24 hours of the scheduled exam.

Eligibility for Make-Up Examinations

Students are not automatically entitled to sit for the make-up examination. To be eligible, the student must have contacted the faculty of record within the specified timeframe and the reason for missing the examination should be listed (below) as a Special Circumstances rule. The date and time of the make-up examination will be established by the College of Nursing and/or the faculty of record.

Special Circumstances

The list below outlines the circumstances that qualify as a "Special Circumstance" for the purposes of missing examinations:

- Student is ill on the day of the examination or receiving health treatment
- Death in student's immediate family
- Jury Duty or Court Summons
- Incarceration
- Military Service
- Natural Disasters

Appropriate documentation (see below) must be provided in order to sit for the make-up examination.

Documentation of Special Circumstances

Students must supply appropriate original documentation to support their request for permission to take the make-up examination. Documents can include:

- Provider note
- Court notice of summons
- Jury duty notification
- Death Certificates

Documents must be presented to faculty within 48 hours of missing the examination.

RESIDENCY REQUIREMENT

The last 30 credits of the Bachelor of Science in Nursing must be taken at Wayne State University.

GRADUATION WITH DISTINCTION

A candidate eligible for the bachelor's degree may receive a special diploma with Magna Cum Laude, or Summa Cum Laude or Cum Laude as indicated. For the University guidelines regarding these distinctions, see the Undergraduate Bulletin.

DEAN'S LIST AND HONORS LIST

Students completing twelve semesters credits in study at Wayne State University are eligible for appointment to the Dean's List each semester. The semester grade point average at Wayne State must be 3.75 or above in order to qualify for the Dean's List, or a 4.0 g.p.a. for students registered for six to 11 credits. Lists of students on the Dean's List will be posted in the College of Nursing. Students who receive marks of "I" or "WF" and grades of "N" or "U" are not eligible.

STUDENTS RIGHTS AND RESPONSIBILITIES

Continuance in the College is contingent upon compliance with officials' rules, regulations, requirements, and procedures of the University and the College of Nursing. The student is responsible for reading the contents of this handbook, the Undergraduate Bulletin pertinent to the College of Nursing, and the Student Code of Conduct, which discusses all forms of academic and non-academic misconduct for which discipline may be imposed. The Student Code of Conduct is set forth in full at the end of this handbook. Students must fulfill all courses and degree requirements in proper sequence with satisfactory scholarship. In case of doubt regarding any matter affecting his or her standing as a student, the student should consult with his/her advisor. The faculty reserves the right to amend or revise the policies and requirements set forth in the College of Nursing.

A student may be excluded from the College when, in the academic judgment of the faculty, the student's professional behavior demonstrates that the student is unsuited for nursing (see Exclusion, page 2) (See "Professional Conduct" under Essential Requirements section.)

Also refer to Student Rights and Responsibilities for the University in the Undergraduate Bulletin.

Time Limitation

The **B.S.N. Direct Admit for Freshmen & Traditional Pathways** must be completed within four calendar years of admission to professional course work, unless an extension is granted by the Scholastic Policy and Admissions (SPA) Committee.

The **Second Career/Degree (CD2) Pathway** must be completed within five consecutive semesters following admission to the program.

All students whose progress is delayed by reason of academic failure and/or leaves of absence beyond the time limitation for the program may be required to repeat and/or take additional courses in order to assure graduation with appropriate preparation for current professional nursing practice. Such determination will be made by the SPA Committee.

Authorized Leave of Absence

A student may request an Authorized Leave of Absence when personal circumstances interfere with the student's ability to devote sufficient time to academic pursuits to assure a reasonable expectation of success. Authorized Leaves of Absences are requested from and granted by the Associate Dean for Academic and Clinical Affairs, in consultation with the Director of Undergraduate Education and the SPA Committee.

1. Currently enrolled students will be granted a Leave of Absence only if they are passing all nursing courses at 75% or better and are therefore eligible for Withdrawal Passing (WP) grades.
2. The student considering a request for an authorized Leave of Absence should contact the Office of Student Affairs for an explanation of the process regarding the leave of absence and to determine if she or he is eligible.
3. A Leave of Absence is approved for a maximum of one year. A student who receives an authorized Leave of Absence and returns before the Leave of Absence expires is guaranteed a space in the program. An authorized Leave of Absence is not considered a withdrawal from the program.
4. A student who does not re-enter the program by the end of the authorized period will be considered a voluntary withdrawal.
5. A student who withdraws from the nursing program for any reason must reapply to the College of Nursing as a new applicant. A student who takes an unauthorized leave of absence will be considered to have voluntarily withdrawn from the program and must apply for admission to the College of Nursing as a new applicant.
6. A grade of Withdrawal Pass (WP) is not the same as an authorized leave of absence.

Mark of "I"- Incomplete

1. "The mark of I' (Incomplete) is given to an undergraduate student when he/she has not completed all of the course work as planned for the term and when there is, in the judgment of the instructor, a reasonable probability that the student will complete the course successfully without again attending regular class sessions. The student should be passing at the time the grade of I is given. A written contract specifying the work to be completed should be signed by the student and instructor. Responsibility for completing all course work rests with the student.
2. The mark of I' will be changed to a letter grade when the student completes the course work as arranged with the instructor or, if the instructor has left the University, with the

Chairperson of the department or other instructional unit. Work must be completed within one calendar year. There are NO extensions.

3. The mark of 'I' will not be awarded if, in the instructor's judgment, it is necessary for the student to attend subsequent sessions of the class. If regular attendance is necessary to complete coursework, the student must register for the class for the semester in which attendance is planned. The student will be assessed tuition and applicable fees for the second registration. If the student decides to register for the course, subsequent to the assignment of an 'I', then the mark of 'I' for the original election will be changed to a Withdrawal/Passing (WP'), and the student will be responsible for tuition and applicable fees for the second registration. Students are responsible for notifying their department and the department offering the course that they have reregistered for the course so that the 'I' is not changed to an 'F.'
4. Any unchanged mark of 'I' will, within one calendar year from the time it was received, be changed to a grade of F for failure. This will not be changed after the 'I' is replaced.

Withdrawal From Nursing Courses

A student requesting a withdrawal will be assigned a Withdrawal Passing (WP), Withdrawal Failing (WF), or Withdrawal Non-Attendance (WN). A WF reflects the same grade as a failure in the College of Nursing. A student is excluded if s/he has a failure or a WF in more than one nursing course (i.e., any NUR course).

After the fourth week of the course, the instructor should notify the Assistant Dean, Enrollment and Student Services and the Associate Dean for Academic and Clinical Affairs of the withdrawal.

Students must show diligence and are normally expected to complete the courses they elect. Irresponsible attendance is wasteful of both student and University resources. Students who consistently receive excessive Incompletes and Withdrawals may be refused the privilege of further registration by the Dean or Dean's designee of the College. Students experiencing attendance difficulties should seek counseling from appropriate college or university offices.

Grading Scale - Undergraduate

Letter Grade	Percentage (%)	Honor Points
A	94 – 100	4.00
A-	92 – 93	3.67
B+	89 – 91	3.33
B	83 – 88	3.00
B-	81 – 82	2.67
C+	79 – 80	2.33
C	75 – 78	2.00
C-	71 – 74	1.67
D+	69 – 70	1.33
D	64 – 68	1.00
D-	62 – 63	0.67
F	61 and below	0.00

Re-Entry Into the College of Nursing After First Failure

Any failure will affect the student's plan of work and projected graduation date. An override for registration will not be granted until the student has met with their College of Nursing Academic Services Officer and has completed the Undergraduate Academic Advising for Course Failure form and a revised Plan of Work is completed. Both documents must be signed by the student, their Academic Services Officer and the Assistant Dean, Enrollment and Student Services

Readmission after an Absence of More Than One Academic Year

Nursing students whose attendance in the nursing curriculum has been interrupted for more than one academic year, unless an exception to the leave policy has been granted by the Scholastic Policy and Admissions (SPA) Committee, must apply for readmission to the College of Nursing. Students must apply for readmission at least one full semester prior to the desired term of readmission. Applications for readmission must be reviewed by the SPA Committee. Readmission decisions are based on the student's academic record with consideration given to grades in prerequisite and nursing courses, length of time of absence from the program, and potential for successful completion of the program. Readmission into the College of Nursing and the student's original program option (Traditional or Second Career/Second degree) is not guaranteed. Readmission decisions may include competency based testing and/or completion of a written exam related to course content. Readmission into the College of Nursing will not occur until approved by SPA and the student has met with their CON ASO and completed a revised Plan of Work. Both documents must be signed by the student, their Academic Services Officer and the Assistant Dean, Enrollment and Student Services.

SENIOR YEAR AUDIT

All students should meet with their advisor in the Office of Student Affairs in the semester prior to senior year for a degree audit to ensure compliance with all requirements in preparation for graduation. Failure to do so may result in a delay in awarding of the degree. It is the responsibility of the student to meet and satisfy all University, College and program requirements. Before graduating you must complete an Application for Degree. This form is available on Academics and must be submitted no later than the fourth week of classes in the term in which you expect to graduate. See www.commencement.wayne.edu/graduation.php for instructions.

LICENSURE PREPARATION

All students entering the undergraduate program in Fall 2002 and thereafter (who are not already RNs) are required to complete nationally normed tests throughout their undergraduate program of study. Individual course syllabi will indicate how this requirement is applied and what part of the course grade will be assigned to these tests. Successful completion of these course requirements is integral to successfully passing the courses. See HESI Section in the handbook for more information.

A satisfactory score is dictated by the comprehensive exam used and will be identified prior to the beginning of the semester in which the exam takes place. Each graduating student (who is not already a licensed RN) must also complete an approved NCLEX Review course in preparation for the NCLEX licensure examination as part of the program requirements. Students who achieve a score of 900 or better on the first HESI Comprehensive Exit Exam are exempt from the required NCLEX Review course although they may elect to participate in this review. The responsibility for the cost for the NCLEX Review course is that of the individual student. All program requirements must be met before a student can be certified as completing their degree requirements with the State of Michigan Licensing Board.

In order to begin a professional nursing career, successful writing of the National Council Licensure Examination for Registered Nurses (NCLEX-RN) is required. The NCLEX-RN is administered by state boards of nursing as part of the process used to determine whether registered nurse candidates meet licensure requirements. The examination is developed by the National Council of State Boards of Nursing to measure a candidate's ability to practice safely and effectively as a registered nurse in an entry-level position. It is designed to test the practical application of knowledge and skills in health care situations that occur frequently in entry-level nursing practice.

Graduates must satisfactorily complete the licensing examination before practicing as professional registered nurses (RNs).

STUDENT CONSENT TO RECORDING

Classes may be recorded by the College of Nursing for purposes including, but not limited to, online section viewing, video pod casting to students enrolled in the course for review, student illness, and absences associated with religious holidays and disability accommodations. Class recordings will be available to students through their password protected Blackboard site. Recording devices are prohibited in the classroom except with the instructor's permission.

HESI EXIT EXAM

NUR 4060 is an integration of knowledge of ethics, standards, and expectations of professional nursing roles with an emphasis on critical thinking. NUR 4060 also contains the HESI Exit Exam, the comprehensive exam required for graduation. Prior to graduation, students are evaluated based on a combination of case studies, quizzes and practice exams, as well as their score on the HESI Exit Exam. This exam is heavily weighted in the overall course grade based on its ability to predict success on NCLEX.

Students are allowed four attempts at successfully achieving a passing score on the HESI Exit Exam. The costs associated with the first two attempts are included in the students' fees and there is no additional charge. However, if a third or fourth exam is required, any and all costs associated with those exams are the student's responsibility. Students will receive a grade of "Incomplete" until the 4th attempt has been scheduled and completed.

If the student still fails to achieve a score of 900 on the HESI Exit exam, the student will receive a grade of "C" in NUR 4060 and counseled by the ASO as to the possible implications of the score on successful completion of the NCLEX exam.

LIVE REVIEW

A satisfactory score is dictated by the comprehensive exam used and will be identified prior to the beginning of the semester in which the exam takes place. Each graduating student (who is not already a licensed RN) must also complete an approved NCLEX Review course in preparation for the NCLEX licensure examination as part of the program requirements. Students who achieve a score of 900 or better on the first HESI Comprehensive Exit Exam are exempt from the required NCLEX Review course although they may elect to participate in this review. The responsibility for the cost for the NCLEX Review course is that of the individual student. All program requirements must be met before a student can be certified as completing their degree requirements with the State of Michigan Licensing Board.



B.S.N. DIRECT ADMIT FOR FRESHMEN PATHWAY

The following curriculum outlines the requirements for the Bachelor of Science in Nursing – Direct Admit for Freshmen pathway. Students must achieve a “C” or higher in all prerequisite courses. An overall minimum prerequisite GPA of a 3.0 or higher is required upon completion of all prerequisite courses in order to maintain good academic standing in the College of Nursing. The College of Nursing will allow up to one prerequisite course to be taken at a community college. Students are allowed to repeat no more than one prerequisite course. Repeating a course may delay completion of the program.

Students who do not place into BIO 1510 based upon their ACT/SAT or WSU Placement Exam score are required to take BIO 1050. Placing into BIO 1050 may delay your completion of the program if a Spring/Summer course is not taken.

The following curriculum outlines the requirements for the Bachelor of Science in Nursing for students enrolled in the Direct Admit pathway. Students must achieve a “C” or better in all professional nursing courses. These courses may not be taken for Passed/Not Passed grades. A cumulative University GPA of 2.00 or above must be maintained.

B.S.N. Direct Admit for Freshmen Pathway Curriculum

Freshmen Year	Fall I – 15/16 Credits		Credits
	BIO 1510 - Basic Life Mechanisms		4
	CHM 1020 - General Chemistry I		4
	PSY 1020 - Elements of Psychology or PSY 1010 - Introduction to Psychology		3/4
	Nursing Mathematics Requirement*		3
	Wayne Experience (WE) - <i>as of 2019</i>		1
	Winter I - 15 credits		
	BIO 2870 - Anatomy & Physiology		5
	PSY 2410 - Health Psychology		4
	ENG 1020 - Basic Composition		3
NFS 2030 - Nutrition and Health		3	

Sophomore Year	Fall II - 15 credits		Credits
	NUR 2010 - Health Assessment: History Taking and Physical Examination		3
	NUR 2030 - Pathophysiology Related to Nursing Practice		3
	NUR 2060 - Nursing Implications of Drug Administration		3
	ENG 3010 - Intermediate Composition		3
	Oral Communication (OC)		3
	Winter II - 16 credits		
	NUR 2050 - Supportive Measures for Basic Care Needs		5
	NUR 2995 - Special Topics in Foundations of Professional Nursing		3
	NUR 3405 - Introduction to Research and Evidence Based Practice		3
BIO 2200 - Microbiology		5	

Junior Year	Fall III - 16 credits	Credits
	NUR 3010 - Restorative Care of Adults and Elderly with Acute Illness	5
	NUR 3015 - Restorative Care: Psychiatric Mental Health Nursing Across Life Span	5
	NUR 4300 - Nursing Informatics	3
	Cultural Inquiry (CI)	3
	Winter III - 16 credits	
	NUR 3020 - Restorative Care of Adults and Elderly with Chronic Illness	5
	NUR 4010 - Integrative Care of Children and Their Families	5
	NUR 4800 - Transcultural Health through the Life Cycle	3
Diversity, Equity, and Inclusion (DEI)	3	

Senior Year	Fall IV - 15 credits	Credits
	NUR 4020 - Integrative Care of the Perinatal Family	5
	NUR 4040 - Leadership and Management in Nursing Practice	4
	Social Inquiry (SI)	3
	Civic Literacy (CIV)	3
	Winter IV - 13 credits	
	NUR 4050 - Theory of Caring for Complex, Critically Ill Patients	3
	NUR 4060 - Synthesis of Core Nursing Knowledge	5
	NUR 4120 - Community Focused Nursing Practice (WI)	5

Total Nursing Credit Hours	68
Total General Credits	53/54
Total B.S.N. Credit Hours	121/122

*Nursing Mathematics Requirement may be satisfied by:

- Successfully completing MAT 1000, MAT 1050, or STA 1020 at WSU with a grade of "C" or higher.
- Placing into a mathematics course above the level of MAT 1050 on the WSU Mathematics Placement Examination.
- Achieving minimum score required to waive course requirement on national standardized tests.

Some Competencies may be satisfied by examination. Elective credits may be needed to meet the 121 total credits required for degree. Students should consult with their Academic Services Officer regarding their own requirements. The curriculum design is for informational purposes and is subject to change by the College of Nursing. Contact your Academic Services Officer to develop an individualized Plan of Work.

TRADITIONAL B.S.N. PATHWAY

The online application for 2019 admission will open in August 2018. Applicants are eligible to apply to the Traditional BSN program if they are entering professional nursing for the first time and meet the following criteria:

- Completed a minimum of 30 semester credits and all prerequisites by the end of the semester of the year you intend to apply.
- Complete all prerequisites with a grade of "C" or better.
- Have a minimum of 3.0 grade point average in all prerequisite courses*.
- Grades earned in professional nursing courses will be taken into account
- If the TOEFL (Test of English as a Foreign Language) is required, a minimum total score of 101 must be received (25 Listening, 25 Reading, 25 Writing, and 26 Speaking). To be exempt from the TOEFL requirement for the CON the applicant must possess at least one of the following exemptions: Your native language is English or You have completed all secondary or postsecondary education in the United States, Canada or other another English-speaking country.

Science Prerequisite Courses	Credits
▪ BIO 1510 – Basic Life Mechanisms *	4
▪ BIO 2870 – Anatomy & Physiology *	5
▪ CHM 1020 – General Chemistry I *	4

Non-Science Prerequisite Courses	Credits
▪ ENG 1020 – Basic Composition	3
▪ PSY 1020 – Elements of Psychology or PSY 1010 – Intro to Psychology	3/4
▪ PSY 2410 – Health Psychology or PSY 2400 Developmental Psychology**	4
▪ NFS 2030 – Nutrition and Health	3
▪ Nursing Mathematics Requirement ***	3

*All science courses must have a lab component completed to satisfy the prerequisite requirement.

**Current Wayne State University students are required to take PSY 2410 – Health Psychology.

***Mathematics requirement may be met by one of the following:

- Successfully completing MAT 1000 or MAT 1050 or STA 1020 at WSU with a grade of "C" or higher.
- Placing into a mathematics course above the level of MAT 1050 on the WSU Mathematics Placement Examination.
- Achieving minimum score required to waive course requirement on national standardized tests.
- Transferring credit for a course equivalent to MAT 1000 (or higher) or STA 1020 with a grade of "C" or higher at another college or university.

The following curriculum outlines the requirements for the Bachelor of Science in Nursing for students enrolled in the Traditional Program. All science courses must have a laboratory. Students must achieve a "C" or better in all professional nursing courses. These courses may not be taken for Passed/Not Passed grades. A cumulative University GPA of 2.00 or above must be maintained.

Traditional B.S.N. Pathway Curriculum

Year I	Fall I - 12/13 credits		Credits
	NUR 2010 - Health Assessment: History Taking and Physical Examination		3
	NUR 2030 - Pathophysiology Related to Nursing Practice		3
	NUR 2060 - Nursing Implications of Drug Administration		3
	ENG 3010 - Intermediate Composition		3
	Wayne Experience (WE) - <i>as of 2019 for transfer students</i>		1
	Winter I - 16 credits		
	NUR 2050 - Supportive Measures for Basic Care Needs		5
	NUR 2995 - Special Topics in Foundations of Professional Nursing		3
	NUR 3405 - Introduction to Research and Evidence Based Practice		3
BIO 2200 - Microbiology		5	

Year II	Fall II - 13 credits		Credits
	NUR 3010 - Restorative Care of Adults and Elderly with Acute Illness		5
	NUR 3015 - Restorative Care: Psychiatric Mental Health Nursing Across Life Span		5
	NUR 4300 - Nursing Informatics		3
	Winter II - 13 credits		
	NUR 3020 - Restorative Care of Adults and Elderly with Chronic Illness		5
	NUR 4010 - Integrative Care of Children and Their Families		5
NUR 4800 - Transcultural Health through the Life Cycle		3	

Year III	Fall III - 9 credits		Credits
	NUR 4020 - Integrative Care of the Perinatal Family		5
	NUR 4040 - Leadership and Management in Nursing Practice		4
	Winter III - 13 credits		
	NUR 4050 - Theory of Caring for Complex, Critically Ill Patients		3
	NUR 4060 - Synthesis of Core Nursing Knowledge		5
NUR 4120 - Community Focused Nursing Practice		5	

Total Nursing Credit Hours	68
Total General Credits	53/54
Total B.S.N. Credit Hours	121/122

Students are required to meet the University General Education course requirements in order to meet qualifications to graduate. Some General Education requirements may be satisfied by examination. Elective credits may be needed to meet the 121 total credits required for degree.

Students should consult with their Academic Services Officer regarding their own requirements. The curriculum design is for informational purposes and is subject to change by the College of Nursing. Contact your advisor to develop an individualized Plan of Work.

The last thirty credits in BSN course work must be taken at Wayne State University.

B.S.N. SECOND CAREER/SECOND DEGREE (CD2) PATHWAY

The online application for 2019 admission will open in August 2018. Applicants are eligible to apply to the Second Career/Second Degree (CD2) pathway if they are entering professional nursing for the first time and meet the following criteria:

- Completed a bachelor’s degree from an accredited institution or equivalent.
- Complete all prerequisites with a grade of “C” or better.
- Have a minimum of 3.0 grade point average in all prerequisite courses.
- Prerequisite courses may not be taken for Passed/Not Passed grades.
- If the TOEFL (Test of English as a Foreign Language) is required, a minimum total score of 101 must be received (25 Listening, 25 Reading, 25 Writing, and 26 Speaking). To be exempt from the TOEFL requirement for the CON the applicant must possess at least one of the following exemptions: Your native language is English or You have completed all secondary or postsecondary education in the United States, Canada or other another English-speaking country.

Science Prerequisite Courses	Credits
▪ BIO 1510 – Basic Life Mechanisms *	4
▪ BIO 2200 – Microbiology *	5
▪ BIO 2870 – Anatomy & Physiology *	5
▪ CHM 1020 – General Chemistry I *	4
Non-Science Prerequisite Courses	
▪ PSY 2410 – Health Psychology or PSY 2400 Developmental Psychology	4
▪ NFS 2030 – Nutrition and Health	3
▪ Any Sociology course (except Statistics)	
▪ Any Cultrual Inquiry (CI) general education course	

*All science courses must have a lab component completed to satisfy the prerequisite requirement.

The following curriculum outlines the requirements for the Bachelor of Science in Nursing for students enrolled in the CD2 pathway. Students must achieve a “C” or better in all professional nursing courses. These courses may not be taken for Passed/Not Passed grades. A cumulative University GPA of 2.00 or above must be maintained.

B.S.N. Second Career/Second Degree (CD2) Pathway Curriculum

Semester I (Spring/Summer) - 9 credits	Credits
NUR 2010 - Health Assessment: History Taking and Physical Examination	3
NUR 2030 - Pathophysiology Related to Nursing Practice	3
NUR 2060 - Nursing Implications of Drug Administration	3
Semester II (Fall) - 11 credits	
NUR 2050 - Supportive Measures for Basic Care Needs	5
NUR 2995 - Special Topics in Foundations of Professional Nursing	3
NUR 3405 - Introduction to Research and Evidence Based Practice	3

Semester III (Winter) - 15 credits		Credits
NUR 3010 - Restorative Care of Adults and Elderly with Acute Illness		5
NUR 3015 - Restorative Care: Psychiatric Mental Health Nursing Across Life Span		5
NUR 4020 - Integrative Care of the Perinatal Family		5

Semester IV (Spring/Summer) - 14 credits		Credits
NUR 3020 - Restorative Care of Adults and Elders with Chronic Illness		5
NUR 4010 - Integrative Care of Children and their Families		5
NUR 4040 - Leadership and Management in Nursing Practice		4

Semester V (Fall) - 13 credits		Credits
NUR 4050 - Theory of Caring for Complex, Critically Ill Patients		3
NUR 4060 - Synthesis of Core Nursing Knowledge		5
NUR 4120 - Community-Focused Nursing Practice		5

Total Nursing Credit Hours	62
Total B.S.N. Credit Hours	121

The curriculum design is for informational purposes and is subject to change by the College of Nursing.

REQUIREMENTS FOR THE CLINICAL EXPERIENCE



The following are required for all students involved in clinical courses. **Students who do not provide their Health Certification, documentation of vaccines and evidence of immunity, and other requirements by the deadline will not be allowed to attend any clinical site (including on-campus labs) and will be dropped from clinical courses. Late paperwork will result in a clinical absence penalty.**

These requirements must be met prior to the start of the clinical experience. Documentation of compliance with these requirements must be uploaded to CastleBranch-Immunization Tracker by **May 15** for Fall enrollment. **Students can access Immunization Tracker online at portal.castlebranch.com/WL48.** Students who have met all of the requirements will be cleared for clinical and clearance will be transmitted to clinical sites. Students who do not meet requirements will be reported to the Director of the Undergraduate Program. Failure to begin the clinical experience as scheduled can compromise the student's ability to succeed in the course.

Health Clearance Penalty Policy

Students will incur one clinical absence for every week passed the established deadline (see Clinical Attendance Policy). Students will not be allowed to start clinicals until faculty and students receive a clearance and start date from the Director of Undergraduate Programs. Students are not allowed to attend clinical without a valid Clinical Permit.

GENERAL REQUIREMENTS

ACEMAPP

Students must complete the requirements for ACE, the Alliance for the Clinical Experience. Requirements include successful completion of on-line classes and exams in HIPAA, OSHA, and BBP. Students must pass the exams within the two attempts or they may not be eligible to enter clinical courses (they may not be able to enter the program or progress in the program).

Health Clearance Form

The examination may be completed by the student's nurse practitioner or physician. The TB skin test must be in effect for the entire academic year. Evidence of immunity are required for Tdap, measles, mumps, rubella, varicella, Hepatitis B and influenza. Students must provide copies of the laboratory reports for all antibody titers. Titers for measles, mumps, rubella and varicella must be within five years. Hepatitis B titers do not expire.

BLS for Healthcare Providers

Students must demonstrate evidence of completion of a BLS/CPR for Healthcare Providers course that covers CPR for the adult, child and infant as well as one-person and two-person CPR. The course may be taken at the College of Nursing, or can be taken at one of several agencies in the community. Original dated certification documents must cover the entire academic/clinical year and must be resubmitted when they expire.

Professional Liability Insurance

Wayne State University College of Nursing will provide professional liability insurance through Nursing Practice Corporation, at a cost of \$13.38 per student. Students must purchase the liability insurance online at www.nursing.wayne.edu.

Health Insurance

Though not required, it is highly recommended by the College that each student also have personal health insurance coverage in addition to the required liability insurance. Students may choose to purchase an injury and sickness insurance plan for a reasonable fee. The policy provides

stipulated amounts for outpatient prescription drugs (sickness only), hospitalization, surgery and emergency room fees, alcoholism and drug abuse treatment, and psychotherapy benefits. Forms to purchase this insurance are available by contacting the Health Insurance Advocate in the Office of International Students and Scholars: 313-577-0724.

Criminal Background Investigation

According to Public Health Code Section 20173 and Section 21173(1), any individual who regularly provides direct services to patients and residents in nursing homes, county medical facilities, homes for the aged and adult foster care cannot be granted clinical privileges if they have been convicted of one or more of the following:

- a. A felony or an attempt or conspiracy to commit a felony within the 15 years preceding the date of application.
- b. A misdemeanor involving abuse, neglect, assault, battery, or criminal sexual conduct or involving fraud or theft against a vulnerable adult defined in the Michigan penal code, 1931 PA 328, MCL 750.145m, or a state or federal crime that is substantially similar to a Misdemeanor described in this subdivision within 10 years immediately preceding the date of application.

This legislation as well as regulatory agency requirements mandates that students have a criminal history check conducted in order to gain clinical privileges at the various agencies used during the course of the student's education. Exclusion from a clinical site could jeopardize successful completion of the program. Students must have a criminal background check performed by CertifiedBackground.com.

Urine Drug Screen Testing

In addition to the Criminal Background Investigation, many health care agencies require results of a urine drug screen test (negative result) prior to the beginning of your clinical experience. **This must be obtained at the Wayne State University Campus Health Center.** The screen must include the following drugs: Amphetamines, Benzodiazepines, Methadone, Phencycline, THC (Marijuana), Barbiturates, Cocaine and Opiates.

The use of medical marijuana will provide a positive result on a urine drug screen. Students with a Medical Marijuana Registry Identification Card will be required to submit a valid copy to the Office of Student Affairs. Wayne State University College of Nursing's clinical partners may exclude a student with a positive drug screen from attending clinical courses at their site, which could jeopardize the successful completion of the program.

Results of the Urine Drug Screen test must be submitted and will become part of your health information file.

Influenza Vaccination

Proof of influenza vaccination must be uploaded to your CastleBranch-Immunization Tracker by October 15.

CHECK LIST FOR CLINICAL REQUIREMENTS

Must be valid for academic year

- Create Immunization Tracker Account
- Health Clearance Form with Immunization record
- TDAP (Tetanus, Diphtheria, Pertussis)
- Measles, Mumps, Rubella, Varicella, Influenza Titters (required) and Vaccinations (optional)
- Hepatitis B Virus Inoculation Titters and Vaccination record (required)
- BLS for the Professional Rescuer (Annual verification)
- TB Skin Test or documentation of no active TB (Annual verification)
- Pay fee for Professional Liability Insurance (Annual verification)
- Criminal Background Investigation
- Urine Drug Screen
- ACEMAPP requirements (online modules)

CLINICAL ATTIRE

Uniform

Approved nursing attire must be worn during the clinical placement. Scrubs and lab coats must be ordered through the university Barnes & Noble bookstore. Within the healthcare agency, the student is expected to present a clean, well-groomed appearance. The student represents not only him/herself but the College of Nursing and the nursing profession. Students are expected to use good judgment regarding their professional attire, especially when in Community Health Agencies or as senior students in "management" settings.

ID Badge

All nursing students are required to obtain a Wayne State University One Card. Students wear their OneCard while at their clinical site. OneCard lanyards can be obtained from the College of Nursing, Office of Student Affairs. A lost or stolen badge must be reported to the University immediately. Misuse of the OneCard will result in immediate forfeiture and possible disciplinary action.

CLINICAL PLACEMENTS

Students are assigned clinical placements by OSA. Clinical placements are determined by space availability and academic variables.

CLINICAL ATTENDANCE POLICY

The need for regular and punctual attendance is one enforced by employers, as well as in all of the Wayne State University College of Nursing programs. It is imperative that students attend all clinical days, regardless of the setting, to develop the necessary skills to function as a professional registered nurse. However, it is recognized by the faculty that illnesses and other life events do occur. Students must notify their clinical faculty of any absence prior to the beginning of the clinical day, otherwise they will be considered a “no call-no show.” If a student arrives to clinical with a communicable illness, he/she will not be allowed to participate in patient care and will be sent home. All absences are required to be made up.

Exceptions to this policy may only be granted by the Associate Dean of Academic and Clinical Affairs in collaboration with the Director of the Undergraduate Program.

Absences

The first clinical absence will be made up with no deductions in a student’s grade. Within one week of the absence, the student must make arrangements for an agreed on make-up assignment with the course coordinator and clinical faculty. While one option for a makeup assignment is the simulation lab, alternate experiences may also be assigned by the Course Coordinator in collaboration with the clinical faculty.

Each additional clinical absence will result in a 5% percent reduction in the course grade. In addition to course grade reduction, within one week of the absence, the student must make arrangements for an agreed on make-up assignment with the course coordinator and clinical faculty. If a student misses two clinical days, they will be required to meet with the course coordinator, clinical instructor and his/her OSA advisor to determine his/her ability to continue in the course. More than two clinical absences place in jeopardy the student’s ability to successfully complete the course.

“No-call, No-show”

When a student fails to notify the clinical instructor of an absence prior to the start of the assigned clinical day, the event will be considered “no call-no show.” This will result in 10% reduction in overall course grade and the student will be expected to make up the clinical time. In the event of a second “no-call-no show” event, the student will receive a grade of “F” in the course and will not be allowed to participate in any scheduled clinical experiences.

Punctuality

Nursing is a profession that requires punctuality. Students are expected to be on time for clinical and all assigned clinical activities. The student MUST allow time for traffic congestion, parking problems, bad weather, and car trouble. Two separate instances of tardiness of less than or equal to 30 minutes will equate to one absence. A single tardy episode of more than 30 minutes equates to an absence even if the student is allowed to remain in the clinical setting.



UNIVERSITY-AUTHORIZED MEDICAL FACILITIES

Enrolled students experiencing an injury or non-personal illness (excludes personal illnesses such as, but not limited to, flu, cold/sinus, etc.) on campus or while attending class or participating in University-sponsored activities shall receive initial treatment at a University-authorized medical facility as noted below:

Emergency issues:

- **DMC – Detroit Receiving Hospital – ER**
4201 St Antoine St, Detroit, MI 48201
(313) 745-3000
- **Henry Ford Hospital System – Main Campus – ER**
2799 West Grand Blvd, Detroit, MI 48202
(313) 916-2600

Non-emergency Issues*:

- **University Health Center**
5200 Anthony Wayne Dr., Suite 115, Detroit, MI 48202
(313) 577-5041
- **Henry Ford Medical Center – Harbortown**
3370 E Jefferson Ave, Detroit, MI 48207
(313) 656-1600

Only the initial treatment necessary for an injury or illness requiring immediate attention is covered by this policy. The student is responsible for any subsequent treatment.

PROCEDURE

Student Responsibility Action

1. Notify Instructor/Administrator or Department of Public Safety of injury or illness immediately.
2. Report to the appropriate University-authorized medical facility for initial treatment, as noted above.
3. Complete the top portion of the Report of Injury (<http://idrm.wayne.edu/risk/student-forms.php>) form and sign bottom portion.
4. If the student receives an invoice for initial service, student shall forward the invoice to the Office of Risk Management for payment review. For services/treatment beyond the initial visit, the student shall either self-pay directly to the provider or forward the invoice to the personal health insurance carrier

It is important to note that only the initial treatment for the actual injury is covered by the University. Any diagnostic testing, prescriptions or subsequent visits are the responsibility of the student.

*Walk-ins should be no later than 3:00 p.m. for both clinics.

BLOODBORNE PATHOGEN EXPOSURE PLAN

All students should use extreme caution in the care of their patients to avoid needle sticks and exposure to Bloodborne pathogens. All students will use Universal Precaution in all patient care settings.

In the event of a needle stick or exposure to bloodborne pathogens:

Students who are possibly exposed to bloodborne pathogens by way of needle sticks or exposure to human body fluids must report the exposure to their clinical instructor immediately. They should wash off or flush out exposure as soon as possible after it occurs according the guidelines provided by the ACE modules or the clinical agency."

1. Exposure during a precepted experience must be reported immediately to the preceptor and as soon as possible to the course faculty member.
2. For students who are possibly exposed to bloodborne pathogens by way of needle sticks or exposure to human body fluids at off-campus sites, such as hospitals or community health settings, the following policy will apply:
 - For exposures in a hospital or another agency with a policy covering possible exposure to bloodborne pathogens, the policy of the facility will be followed.
 - For exposures in a setting where there is no policy on possible exposure to bloodborne pathogens, the student should either report immediately to University Health Center (UHC), 4K (7:30 a.m. -3:30 p.m.*) or Henry Ford Health Center-HarborTown Suite 100 (8:00a.m.-4:30p.m.*) located on Jefferson just west of Belle Isle or to their personal health care provider (at your own expense). If the injury occurs after the previously mentioned clinic's operational hour, the student has the option to go to Detroit Receiving or Henry Ford Emergency Room for initial treatment. If the agency does not cover the cost of testing for students, students are responsible for the cost of testing beyond the initial treatment for exposure (health insurance may cover):
 - HIV antibody
 - Hepatitis B surface antibody
 - Hepatitis C antibody
 - Testing for Viral Hemorrhagic Fevers (e.g. Ebola and Marburg fevers)
 - Pregnancy test (for women)

ESSENTIAL QUALIFICATIONS OF CANDIDATES FOR THE UNDERGRADUATE NURSING PROGRAM



REQUIRED SKILLS AND ABILITIES

The Wayne State University College of Nursing Bachelor of Science in Nursing (both traditional and second degree programs) prepares student to be caring, competent and active participants in an increasingly diverse, complex, and rapidly changing health care environment. The role of a professional nurse requires skills and abilities in the cognitive, affective, psychomotor, physical, and social arenas and mastery of these skills is essential to becoming a competent member of the health care team.

In addition to the standards of academic integrity and overall professional behavior outlined in the Wayne State University College of Nursing (WSU CON) Student Handbook and the acceptable academic and nonacademic behavior outlined in the Student Code of Conduct, the candidate for the WSU CON must possess the following abilities.

Motor Skills

Although the professional nurse may function in a variety of settings post graduation, in order to successfully complete this program, the candidate must have the ability to care for patients in all health care settings. For example, the candidate must be able to perform basic life support; provide physical assistance to patients including repositioning, transfers and ambulation; and prepare and administer medications including those requiring the manipulation of syringes, intravenous tubing, and small pills.

Sensory/Observation

The candidate must be able to learn in the classroom, laboratory, and clinical setting using a variety of senses. Changes in a patient's condition is often manifested in physical changes and so the candidate must be able, for example, to clearly assess heart and lung sounds, changes in a patient's voice, palpate skin temperature and pulses, and see changes in skin color or other physical characteristics.

Communication

The role of the professional nurse requires the ability to communicate clearly and effectively, both orally and in the written form, with peers, faculty, patients and their families, and other members of the health care team. This communication is often time sensitive, and so the candidate must possess the ability to communicate accurately and in a timely manner.

Cognitive

The use of written information is extensive; therefore, the candidate must be able to quickly read and understand the written word and then integrate and synthesize that information into the clinical setting. He or she must be able to do math calculations needed in the care of patients in all health care settings (for example, calculate the correct dose of medications including intravenous administration).

Behavior/Emotional

The WSU CON program is fast paced and can be stressful. The candidate must possess the ability to work effectively under stress, in a rapidly changing environment, while maintaining mature, empathetic, and effective relationships with peers, faculty, patients, and other professionals.

Professional Conduct

Nursing is a caring profession governed by the [American Nurses Association](#) code of conduct, ethics, and professional standards. . Candidates must be willing to abide by these codes and standards in their provision of care. This includes the ability to provide caring, competent, compassionate, and professional care.

ACCOMMODATIONS FOR DISABILITY

The Wayne State University College of Nursing is committed to providing all students equal access to its programs. The College works closely with the University Student Disability Services (SDS) to provide reasonable accommodations to qualified students. However, it is important to note that the College is not required to provide and will not provide accommodations that fundamentally alter the essential functions or technical standards of the program. It should also be noted that the decision to accept a student for practice at a clinical agency rests solely with the agency. Common examples where accommodations are often required for students include those with lifting restrictions (e.g. pregnancy and the post-partum period), medical devices (attached or implanted), and fractured/broken limbs.

The process for obtaining accommodations, including acquiring the required documentation of the need for accommodations, meeting with Wayne State College of Nursing and communication with our clinical agencies, can be time consuming. Therefore, the College of Nursing strongly encourages students and applicants who wish to request accommodations contact the Student Disability Services Office before the actual start of the program. Accommodations cannot be applied retroactively. To learn about the process in detail, including expected times that are typical for completion of the process, please contact **Student Disability Services**.

Student Disability Services

5155 Gullen Mall – Suite 1600 – Undergraduate Library

studentdisability@wayne.edu

<https://studentdisability.wayne.edu/>

(313) 577-1851 Office

(313) 202-4216 Videophone

(313) 577-4898 Fax.



NURSING SKILLS LABORATORY (ROOMS 217 & 219 COHN)

The Nursing Skills Laboratory is a practice lab with simulated hospital bedside units. Students practice various nursing procedures under the guidance of a nursing faculty.

PHYSICAL ASSESSMENT LEARNING LABORATORY (ROOM 30 COHN)

This laboratory provides materials, activities, and facilities for students to acquire skills in history-taking and physical assessment. The Physical Assessment Learning Laboratory (PALL) is located on the lower level of the Cohn Building. It is equipped with physical examination spaces and equipment. Students learn physical examination skills through the use of demonstration, media viewing, and practice.

OFFICE OF HEALTH RESEARCH (ROOM 315 COHN)

The Office of Health Research (OHR), the research arm of the College of Nursing, embodies the commitment of faculty to research. The idea of a center originated with faculty in the mid-60's: it became a reality in 1969. It was the first such center in an academic setting devoted to the generation of new knowledge which underpins the discipline and profession of nursing. The research program of the OHR focuses on nursing and health-related research, including interdisciplinary research, for the purpose of advancing nursing knowledge and improving nursing and health (Urban Health and Self-Care & Caregiving). Because the research objectives also target health needs of the urban community, the research agenda also advances the research programs of the University.

www.nursing.wayne.edu/faculty/health-research.php

SIMULATION LABORATORY (ROOMS 217 & 222 COHN)

The Simulation laboratory contains state-of-the-art technology (including high fidelity mannequin simulators and audio-visual real-time capture) to provide the student with an immersive and interactive environment which enhances student learning. Students, in conjunction with faculty, are able to practice and blend skills taught in the Nursing Skills Laboratory, Physical Assessment Learning Laboratory and the classroom. Because of the immersive nature of the simulation environment, students are required to behave in a professional manner and wear approved Wayne State University clinical uniforms when in the Simulation Laboratory.



Since education is a cooperative effort between teacher and student, both parties must fulfill obligations if the integrity and efficacy of the instructional process are to be preserved.

RESPONSIBILITIES OF FACULTY MEMBERS

1. To contribute to and remain abreast of the latest developments in their fields;
2. To continually pursue teaching excellence;
3. To treat all students with respect and fairness without regard to ancestry, race, color, religion, political belief, country of origin, sex (including gender identity), sexual orientation, age, marital status, familial status, height, weight, disability or veteran status.
4. To encourage differing viewpoints and demonstrate integrity in evaluating their merit;
5. To attend regularly and punctually, adhere to the scheduled class and final examination times, and arrange for notification of absence and coverage of classes;
6. To establish and maintain appropriate office hours;
7. Present, early in the semester, the following course information:
 - a. course objectives and general outline;
 - b. classroom procedures to be followed, expectations concerning class attendance, and proposed dates of major evaluations (including examinations, papers, and other projects);
 - c. grading policy;
 - d. where appropriate, a schedule of class-related activities, including class meetings and laboratory sessions;
 - e. lists of texts and/or other materials needed for the course;
 - f. late enrollment, withdrawal, and other special policies.
8. To provide and adhere, within reasonable limits, to the written syllabus of the course;
9. To know course matter thoroughly and prepare and present the material conscientiously;
10. To be informed of University services and recommend their use to students when advisable;
11. To follow these policies concerning written work and grades:
 - a. grade and return written work promptly;
 - b. submit final grades by the scheduled time;
 - c. retain written materials not returned within the semester (e.g., final examinations, major term papers) for one academic semester in accordance with unit policy and allow students to examine such materials;

12. To implement unit procedures for student evaluation of faculty teaching, with attention to preserving student anonymity;
13. To behave appropriately in dealing with students so as to maintain a scholarly atmosphere.

RESPONSIBILITIES OF STUDENTS

1. To inform themselves of and to fulfill all requirements of the University and those of the college and department from which they expect to receive their degree;
2. To fulfill conscientiously all assignments and requirements of their courses;
3. To attend classes regularly and punctually;
4. To maintain a scholarly, courteous demeanor in class;
5. To uphold academic honesty in all activities;
6. To notify the instructor as early as possible if prevented from keeping an appointment or carrying out an assignment;
7. To discuss with the instructor any class-related problem and follow established procedures in the resolution of these problems;
8. To adhere to the instructor's and general University policies on attendance, withdrawal, or other special procedures.

It is expected that faculty and students will fulfill their obligations to the instructional process. If, however, a complaint does arise, the parties should meet in an effort to resolve the matter. When such a discussion fails to resolve the problem, the college's published procedures should be followed. Although the University Ombudsperson is not a direct part of the appeal process, students and faculty may consult the Ombudsperson at any point during such proceedings.

UNIVERSITY GUIDELINES FOR WORKING WITH DISRUPTIVE OR DISTRESSED STUDENTS

All members of the University community are expected to conduct themselves in a manner which is conducive to an environment that encourages the free exchange of ideas and information. However, from time to time, the University is called upon to assist individuals who are displaying disruptive behavior or behavior that shows signs of distress, such as:

1. words or actions that have the effect of intimidating or harassing another;
2. words or actions that threaten harm to themselves or others; Words or actions that severely impair their ability to function within the University environment;

To ensure respect for the legal rights of every person, the University will take immediate steps to deal with all instances of disruptive or distressed behavior and provide appropriate resources to those involved.

All students, including those in distress, are accountable for their actions. The University and the College do not tolerate violent, dangerous or threatening behavior. Such behavior will immediately be reported to the Wayne State Police and to the Dean of Students Office.

If a faculty member, staff member or student has a concern about a particular student's disruptive or distressed behavior, they should file a Care report with the Dean of Students Office. The Care report can be accessed at: <http://doso.wayne.edu/student-care-report.html>

For more information, contact the Dean of Students Office or visit <http://doso.wayne.edu/dealing-with-a-disruptive-student.html>

COLLEGE OF NURSING ACADEMIC APPEALS POLICY - GRADES AND EXCLUSIONS



BASIC PRINCIPLES

1. **Assistance** | Student/faculty may contact the College of Nursing, Assistant Dean, Enrollment and Student Services and/or the Wayne State University Ombudsperson at any time for assistance with any problem associated with a grade decision or grade appeal.
2. **Timeliness of Appeals Process** | Failure of the instructor or any appeal officer to respond within the designated time frame of the formal appeal entitles the student to proceed to the next level of appeal. In no case should there be any assumption that a failure to respond at any level signifies a granting of the appeal. Failure of the student to adhere to the time-frames specified in the policy will result in the appeal process being nullified (the appeal will not be heard).
3. **Process** | All steps of the formal grade appeal must be done in written format; no email correspondence is acceptable. Information submitted should be time stamped and dated as it is received.
4. **Academic Dishonesty** | These policy guidelines do not apply to allegations of academic dishonesty. Academic dishonesty matters are addressed under the Student Code of Conduct.
5. **Patient safety** | Students may be removed from a clinical course at any time in which the faculty or clinical agency staff identifies an issue that would constitute unsafe practice in the clinical setting that may jeopardize patient safety.

Note that "days" are counted as Monday through Friday, excluding University holidays.

APPEAL OF GRADE

What Can be Appealed

Only the manner in which the grade was assigned can be appealed. Instructors are expected to evaluate student work according to sound academic standards. It is the instructor's prerogative to assign grades in accordance with his/her academic/professional judgment. If the student believes the manner in which the grade was assigned was done in an unfair manner and the student is able to demonstrate that the unfair manner is based on one of the three criteria stated below, then the student may file an appeal pursuant to the process set forth below. The student assumes the burden of proof in the appeals process.

Grounds for appeals are: (1) the application of non-academic criteria in the grading process, as listed in the university's non-discrimination/affirmative action statute: race, color, sex (including gender identity), national origin, religion, age, sexual orientation, familial status, marital status, height, weight, disability, or veteran status; (2) sexual harassment or discrimination; or (3) evaluation of student work by criteria not directly reflective of performance relative to course requirements.

Grade Appeal Process

Prior to implementing the formal appeal process, the student must discuss in person the disputed grade with the instructor of the course within ten days of notification of the grade. The faculty member will respond in writing with a copy to the student and the Assistant Dean, Enrollment

and Student Services. If the dispute remains unresolved, the student may then initiate a formal appeal.

All steps of the appeal process must be followed within the stated time frame or the appeal process is nullified (will not be heard).

Steps to Initiate a Formal Appeal

1. The student must submit a written statement detailing his or her objections to the faculty response, along with supporting documentation, to the Assistant Dean of Faculty Affairs with copy to the Assistant Dean for Enrollment and Student Services. This statement must be submitted within 14 days following the response of the faculty member who assigned the grade.
2. The Assistant Dean of Faculty Affairs must meet with the student and faculty member, either jointly or individually, within 14 days of receiving the appeal to attempt to resolve the issue.
3. The student must be notified in writing of the Assistant Dean of Faculty Affairs' decision within 21 days of receiving the student's written appeal. As the Dean's designee, the decision of the Assistant Dean of Faculty Affairs shall be the final decision at the College level.
4. Provost Review. The student may request the Provost to review the final decision on the record. A written Request for a Provost Review must be made by the student himself/herself, with a copy to the Dean of the College of Nursing, postmarked within thirty (30) calendar days of the postmark of the College's final decision. The Provost's review of the College's decision will proceed as soon as practicable after notification by the student of his/her wish to seek review.

The student may also file with the Provost a Request for a Postponement of the effect of the College's final decision. Such a Request must be postmarked within seven (7) calendar days of the postmark of the College's final decision, and a copy must be sent to the Dean of the College. Upon receiving a Request for Postponement, the Provost will immediately contact the Dean. Unless the College demonstrates clearly and convincingly that the injury to the College or to third persons that would result from such a postponement would outweigh the injury to the student from denying the postponement, the effect of the decision rendered by the College must be postponed until the date that the Provost issues a decision regarding the underlying Request for Provost Review. The Provost will inform the student and the Dean of her/his decision regarding the Request for Postponement within three (3) school days after receiving the request. Exceptions to this procedure may be granted by the Provost upon a showing of good and sufficient cause.

Pursuant to University policy, the Provost's decision in an academic appeal is final.

APPEAL OF EXCLUSION FOR UNSAFE OR UNPROFESSIONAL BEHAVIOR

Basic Principles

Students are required to demonstrate patterns of professional behaviors which follow the legal and ethical codes of nursing; promote the actual or potential well-being of clients, health care workers, and self in the biological, psychological, sociological and cultural realms; demonstrate accountability in preparation, documentation, communication and continuity of care; and show respect for human rights of individuals.

The following indicators are to be used as guidelines for evaluating safe or professional practice:

1. **Biological, Psychological, Social and Cultural Realms**

The student's practice meets the needs of the client from a biological, psychological, sociological and cultural standpoint.

Examples of unsafe practice include, but are not limited to, the following:

- Displays of mental, physical or emotional behavior(s) which may negatively affect others' well being
- Failure to follow through on suggested referrals or interventions to correct deficit areas, which may result in harm to others
- Acts of omission or commission in the care of clients/patients, such as:
 - Physical abuse
 - Placing the client in hazardous positions, conditions or circumstances
 - Mental or emotional abuse
 - Medication errors that demonstrate a pattern of incorrectly preparing/administering medications and/or failure to follow through with direction/remediation regarding medication administration
 - Failure to accurately record comprehensive client behaviors
 - Attempting activities without adequate orientation or theoretical preparation or appropriate assistance
 - Presenting for clinical practicum under the influence of drugs and/or alcohol (It is expected that students in laboratory settings will not have used alcohol for at least eight (8) hours prior to the beginning of the clinical time period, nor to use alcohol during the clinical period. At no time is the use of illicit drugs condoned).
 - Engaging in criminal behavior
- Interpersonal relationships with agency staff, co-workers, peers, or faculty that results in miscommunications, disruption of client care and/or unit functioning;
- Inability to perform psychomotor skills necessary for carrying out procedures despite direction/remediation.

2. **Accountability**

The student's behavior should consistently demonstrate accountability and professionalism throughout the clinical practicum experience.

Examples of unprofessional practice include, but are not limited to the following:

- Failure to notify the agency and/or instructor of clinical absence
- Failure to adhere to the dress code
- Habitual tardiness to clinical assignments
- Failure to follow through or successfully meet identified learning goals as outlined in a process improvement plan
- Failure to provide concise, inclusive, written and verbal communication

3. **Dishonesty**

Examples of dishonesty include but are not limited to the following:

- Plagiarism
- False reporting or misrepresentation of data related to client, self, others
- Failure to report errors/mistakes or any event(s) that would affect clients or others welfare.

4. Regulatory

The student practices within the boundaries of the Michigan Public Health Code (e.g. Nurse Practice Act), the guidelines set forth in the course syllabi, the Wayne State University College of Nursing Student Handbook, and the rules and regulations of the health care agencies that are specific to the assigned clinical site.

Examples of regulatory violations include but are not limited to the following:

- Violations of patient privacy (HIPAA)
- Participating in skills or behaviors that are outside of the nursing scope of practice while in the clinical agency.
- Violation of clinical permit requirements.

5. Ethical

The student practices according to the American Nurses Association Code of Ethics and the Standards of Practice.

Examples of unethical practice include, but are not limited to the following:

- Refusal of assignment based on client's race, culture, sexual orientation, or religious preference
- Failure to maintain confidentiality
- Misrepresentation of information to the public
- Ignoring unethical behavior(s) of other health care persons in the clinical setting which affects client welfare.

Procedure for Unsafe Behaviors in the Clinical Setting

1. When a clinical instructor makes the determination that a student in the clinical setting has displayed behavior that poses a safety risk to the student, patient, staff, faculty or fellow students, the student shall immediately be relieved of patient care responsibilities and assigned non-patient care responsibilities until the end of that clinical day (a library assignment is an example of an appropriate alternate assignment). The student will not be sent home at this time but will be told that a determination of a corrective course of action will be arrived at after consultation with the course coordinator. The student will not be able to return to clinical until resolution.
2. Within 24 hours, the clinical faculty will write up the incident detailing the clinical events that transpired leading up to the removal of the student from patient care.
3. The clinical faculty will notify the course coordinator within 24 hours of the incident. The course coordinator will immediately notify the Assistant Dean of Faculty Affairs and the Assistant Dean, Enrollment and Student Services via email.
4. The course coordinator, in collaboration with the clinical faculty and Assistant Dean (if necessary), will determine a corrective course of action that may include supervised skill review on campus, written work, and/or an evaluation of student performance by a third party, e.g. the course coordinator or the course coordinator's designee. Corrective course of action may include exclusion from the program.
5. A meeting will be held which includes the student, the Assistant Dean of Enrollment and Student Services or designee and, at a minimum, the clinical faculty, the course coordinator,

- and the Area Assistant Dean or designee. The student will be given advance notice of the time and place of this meeting and will be allowed to have an advisor or support person with him/her. At this meeting, a written summary of the observed clinical behavior as well as the plan for corrective action including time frames for completion will be presented to the student for discussion and signature. The meeting will occur within three business days of the notification of the course coordinator. If the student fails to appear without extenuating circumstances, he or she will be excluded from the program and notified of exclusion by registered mail. Official exclusion (if this is the decision) occurs at this point.
6. If it is determined that the student is excluded from the program, the student is advised to contact the Assistant Dean, Enrollment and Student Services, or designee to learn about the Appeal Policy.

Appeal Process for Exclusion for Unsafe Practice in the Clinical Setting

A student may appeal his/her exclusion from the program for unsafe practice by following the guidelines for appeal identified below.

Steps to Initiate a Formal Appeal:

1. A written appeal outlining the student's view point of the circumstances which caused the student's removal from the clinical course and the rationale for the appeal must be submitted within five business days of the exclusion to the Assistant Dean, Enrollment and Student Services. Appeals submitted after the two day deadline will not be heard.
2. Within one two business day of the receipt of an appeal, the Assistant Dean of Faculty Affairs and the Associate Dean for Academic and Clinical Affairs (serving as the Dean's designee) will review the documentation provided by the instructor and the student and make a decision, which is final. The decision will be forwarded to the Assistant Dean, Enrollment and Student Services, who will notify the student.
3. If the appeal is sustained and the student is allowed to return to the clinical setting, arrangements will be made for the student to make up missed time. Any absences sustained during this time will not fall under the clinical absenteeism policy.
4. If the appeal is denied, the exclusion from the clinical setting will result in an F grade for the course.
5. Provost Appeal. The student may request the Provost to review the final decision on the record. A written Request for a Provost Review must be made by the student himself/herself, with a copy to the Dean of the College of Nursing, postmarked within thirty (30) calendar days of the postmark of the College's final decision. The Provost's review of the College's decision will proceed as soon as practicable after notification by the student of his/her wish to seek review.

The student may also file with the Provost a Request for a Postponement of the effect of the College's final decision. Such a Request must be postmarked within seven (7) calendar days of the postmark of the College's final decision, and a copy must be sent to the Dean of the College. Upon receiving a Request for Postponement, the Provost will immediately contact the Dean. Unless the College demonstrates clearly and convincingly that the injury to the College or to third persons that would result from such a postponement would outweigh the injury to the

student from denying the postponement, the effect of the decision rendered by the College must be postponed until the date that the Provost issues a decision regarding the underlying Request for Provost Review. The Provost will inform the student and the Dean of her/his decision regarding the Request for Postponement within three (3) school days after receiving the request. Exceptions to this procedure may be granted by the Provost upon a showing of good and sufficient cause.

Pursuant to University policy, the Provost's decision in an academic appeal is final.

OTHER COLLEGE OF NURSING APPEALS FOR EXCLUSION BASED ON ACADEMIC PERFORMANCE OR ACADEMIC MISCONDUCT

Steps to Initiate a Formal Appeal

1. The student must submit a written statement detailing the basis of the appeal, along with supporting documentation, to the Assistant Dean of Faculty Affairs with copy to the Assistant Dean, Enrollment and Student Services, and the Associate Dean for Academic and Clinical Affairs. This statement must be submitted within 14 days following the event being appealed.
2. The Assistant Dean of Faculty Affairs must meet with the student within 14 days of receiving the appeal to attempt to resolve the issue.
3. The student must be notified in writing of the Assistant Dean of Faculty Affairs' decision within 21 days of receiving the student's written appeal. As the Dean's designee, the decision of the Assistant Dean of Faculty Affairs shall be the final decision at the College level.
4. If, after your School/College appeal path is exhausted and you wish to continue with the grade appeal process, per the University Academic policy (<https://provost.wayne.edu/academic-policy>), you may request a Provost Review within 30 days of this decision. The request should be addressed to Dr. R. Darin Ellis, Associate Provost for Academic Programs and sent electronically to ag6461@wayne.edu. For assistance with the appeal process, you may contact the Ombudsperson Laura Birnie-Lindemann at ombudsoffice@wayne.edu.

A written Request for a Provost Review must be made by the student himself/herself, with a copy to the Assistant Dean, Enrollment and Student Services and the Dean of the College, postmarked within 30 calendar days of the postmark of the College's final decision, which is to be sent to the address provided by the student in the College's review procedures. The Provost's review of the College's decision will proceed as soon as practical after notification by the student of his/her wish to seek review.

The student may also file with the Provost a Request for a Postponement of the effect of the College's final decision. Such a Request must be postmarked within seven (7) calendar days of the postmark of the College's final decision, and a copy must be sent to the Dean of the College. Upon receiving a Request for Postponement, the Provost will immediately contact the Dean. Unless the College demonstrates clearly and convincingly that the injury to the College or to third persons that would result from such a postponement would outweigh the injury to the student from denying the postponement, the effect of the decision rendered by the College must be postponed until the date that the Provost issues a decision regarding the underlying Request for Provost Review. The Provost will inform the student and the Dean of her/his decision regarding the Request for Postponement within three (3) school days after receiving the request. Exceptions to this procedure may be granted by the Provost upon a showing of good and sufficient cause. Pursuant to University policy, the Provost's decision in an academic appeal is final.



1.0 PREAMBLE

- 1.1 The primary purposes of the Student Code of Conduct are to promote campus civility and academic integrity and to provide a framework for the imposition of discipline in the University setting. The code gives general notice of prohibited conduct and of the sanctions to be imposed if such conduct occurs. The code should be read broadly, and is not designed to define misconduct in exhaustive terms. The code specifies the rights of the student and the rights of other parties to the procedure.
- 1.2 As provided by the Board of Governors in WSUCA 2.31.01, "Student Rights and Responsibilities," and as mandated by academic tradition, the students of Wayne State University possess specific rights and responsibilities. Students are expected to conduct themselves in a manner conducive to an environment that encourages the free exchange of ideas and information. As integral members of the academic community, students have the right to expect that their rights are protected from arbitrary, capricious and malicious acts on the part of other members of the academic community. This Student Code of Conduct is designed to assure that students who are alleged to have engaged in unacceptable conduct receive fair and impartial consideration as specified in this code.
- 1.3 Students are accountable both to civil authorities and to the University for acts which constitute violations of both the law and this code. In such cases disciplinary action at the University will normally proceed while civil or criminal proceedings are pending, and will not be subject to challenge on the grounds that civil or criminal charges involving the same incident have been invoked, dismissed or reduced.
- 1.4 Final authority in student disciplinary matters is vested in the President or his/her designee.
- 1.5 The Office of the Ombudsperson is available to advise students at any stage in the proceedings provided for in this code. To assure that students are aware of that availability, whenever charges are initiated against a student or student organization, the Student Conduct Officer will provide the student (or representative of the student organization) with a copy of a memorandum prepared by the Ombudsperson explaining the Ombudsperson's role.

2.0 DEFINITIONS

When used in this code:

- 2.1 "Academic misbehavior" means any activity which tends to compromise the academic integrity of the institution or subvert the education process. Examples of academic misbehavior include, but are not limited to: (1) cheating, as defined in Section 2.3; (2) fabrication, as defined in Section 2.5; (3) plagiarism, as defined in Section 2.8; (4) academic obstruction, as defined in Section 2.10; (5) enlisting the assistance of a substitute in the taking of examinations; (6) violation of course rules as contained in the course syllabus or other written information provided to the student.
- 2.2 "Aggravated violation" means a violation which resulted or foreseeably could have resulted in significant damage to persons or property, or which otherwise posed a substantial threat to normal University or University sponsored activities.

- 2.3 “Cheating” means intentionally using or attempting to use, or intentionally providing or attempting to provide, unauthorized materials, information or assistance in any academic exercise.
- 2.4 “Distribution” means sale or exchange with an intent to profit.
- 2.5 “Fabrication” means intentional and unauthorized falsification or invention of any information or citation.
- 2.6 “Institution” and “University” mean Wayne State University.
- 2.7 “Organization” means a number of persons who have complied with University requirements for recognition.
- 2.8 “Plagiarism” means to take and use another’s words or ideas as one’s own.
- 2.9 “Student” means a person who has enrolled in or is auditing a course or courses, or who has enrolled in or is taking a special program sponsored by any unit of the University, or who has taken or audited a course or courses at the institution on either a full-time or part-time basis. A person who withdraws from the University after engaging in conduct which may have violated the Student Code of Conduct is considered a “student” for purposes of this Code.
- 2.10 “Academic obstruction” means any attempt to limit another student’s access to educational resources, or any attempt to alter equipment so as to lead to an incorrect answer for subsequent users.
- 2.11 “University premises” means buildings or grounds owned, leased, operated, controlled, or supervised by Wayne State University or Wayne Housing Authority.
- 2.12 “Weapon” means any object or substance designed to cause injury, or incapacity, including, but not limited to, all firearms, pellet guns, switchblade knives, and knives with blades three or more inches in length, and chemicals such as “Mace” or tear-gas.
- 2.13 “University-sponsored activity” means any activity on or off University premises, which is initiated, aided, authorized, or supervised by the University.
- 2.14 “Sexual misconduct” means non-consensual sexual touching, including, among other things, non-consensual oral sex.
- 2.15 “Technology resources” means any and all technologies that produce, manipulate, store, communicate, or disseminate information. These resources include, but are not limited to, wired and wireless data, video and voice networks, computers for processing information, and other devices for storing and archiving information.
- 2.16 Unless otherwise noted, “days” means school days and days Wayne State University is open for business and not calendar days.
- 2.17 “Faculty” applies to full-time, fractional-time, part-time faculty as well as Graduate Teaching Assistants, adjuncts, and Academic Staff with teaching duties.

3.0 PROSCRIBED CONDUCT – STANDARDS AND JURISDICTION

- 3.1 The focus of inquiry in disciplinary proceedings is to determine if the student is in violation of the prohibited conducts outlined in the Student Code of Conduct. Formal rules of evidence are not

applicable, nor will deviations from prescribed procedures or deadlines invalidate the decision or proceeding, unless significant prejudice to a student or to the University results.

- 3.2 The Student Code of Conduct shall apply to conduct that occurs on University or Housing premises and at University or Housing sponsored activities that occur on or off-campus.
- 3.3 Each student shall be responsible for his/her conduct from the time she or he has notified the University that he/she will attend the University through the actual awarding of a degree, even though conduct may occur before classes begin or after classes end, as well as during the academic year and during periods between terms of actual enrollment and even if their conduct is not discovered until after a degree is awarded.
- 3.4 The Student Code of Conduct shall apply to a student's conduct even if the student withdraws from school while a disciplinary matter is pending.

4.0 PROHIBITED CONDUCT

The following conduct is subject to disciplinary action when it occurs on University or Housing premises, or in connection with a University course or University documents, or at a University-sponsored activity.

- 4.1 All forms of academic misbehavior.
- 4.2 Forgery, unauthorized alteration, or unauthorized use of any University document or instrument of identification.
- 4.3 Physical abuse of another person, or conduct which threatens or endangers another, or verbal or physical threats which cause reasonable apprehension of harm.
- 4.4 Unauthorized use, unauthorized possession, or unauthorized storage of a weapon.
- 4.5 Intentionally initiating a threat, or false report or false warning, of fire, explosion, or other emergency.
- 4.6 Disorderly behavior that interferes with activities authorized, sponsored, or permitted by the University such as teaching, research, administration, and including disorderly behavior that interferes with the freedom of expression of others.
- 4.7 Violation of the terms of any disciplinary sanction imposed in accordance with this code.
- 4.8 Illegal use, possession, manufacture or distribution of drugs.
- 4.9 Theft of property or services, or intentional or reckless damage to property, of the institution, or of a member of the institutional community, or of a visitor to the University.
- 4.10 Knowingly possessing stolen property.
- 4.11 Conduct that is a crime under the criminal law of the State of Michigan or the United States.
- 4.12 Unauthorized entrance into, or use of, institutional facilities, including computing and telecommunication facilities and systems.
- 4.13 Knowingly furnishing false information to the institution.

- 4.14 Intentional obstruction or disruption of institutional activities or functions.
- 4.15 Failure to comply with the direction of any authorized institutional representative, acting in the performance of his/her duties.
- 4.16 Maliciously initiating charges pursuant to this procedure when the initiator knows that the charges are baseless.
- 4.17 Misuse or intentional disruption of the University's technological resources.
- 4.18 Any form of sexual misconduct.
- 4.19 Failure to comply with published University regulations or policies. Such regulations or policies include but are not limited to: a) University statutes prohibiting discrimination and sexual harassment; b) Regulations relating to entry and use of University facilities; c) Regulations relating to sale or consumption of alcoholic beverages; d) Regulations relating to use of vehicles and electronic, amplifying equipment; e) Regulations relating to campus demonstrations; f) Regulations relating to misuse of identification or parking cards; g) Regulations relating to residing in the University's residence halls and apartments.
- 4.20 Abuse of the Student Code of Conduct system, including but not limited to: a) Deliberate falsification or misrepresentation of information before a Hearing Committee Panel or before a dean in an informal conference; b) Disruption or interference with the orderly conduct of a Hearing Committee Panel proceeding.

5.0 DISCIPLINARY SANCTIONS

Students found to have committed an act, or acts of misconduct may be subject to one or more of the following sanctions, which shall take effect immediately upon imposition, unless otherwise stated in writing, except as provided in this code. More than one sanction may be imposed for any single violation.

- 5.1 **Disciplinary Reprimand.** Notification that the student has committed an act of misconduct, and warning that another offense may result in the imposition of a more serious sanction.
- 5.2 **Disciplinary Probation.** A disciplinary status which does not interfere with the student's right to enroll in and attend classes, but which includes specified requirements or restrictions (as, for example, restrictions upon the students representing the University in any extracurricular activity, or running for or holding office in any student organization) for a specific period of time as determined in the particular case.
- 5.3 **Loss of Privileges.** Denial of specified privileges for a designated period of time, including, but not limited to, the privilege of participating in non-academic activities or student organizations on campus.
- 5.4 **Discretionary Sanctions.** Assignments, essays, service to the University, or other related discretionary assignments.
- 5.5 **Residence Hall Suspension.** Separation of the student from the residence halls for a definite period of time, or until the student demonstrates that she/he has satisfied conditions established for return determined at the time of suspension.
- 5.6 **Residence Hall Expulsion.** Permanent expulsion of the student from the residence halls.

- 5.7 Suspension. A denial of the privilege of continuing or enrolling as a student anywhere within the University, and denial of any and all rights and privileges conferred by student status, for a specified period of time. At the termination of the suspension the student will be entitled to resume his/her education without meeting any special academic entrance requirements.
- 5.8 Expulsion. A permanent denial of the privilege of continuing or enrolling as a student anywhere within the University, and permanent denial of any and all rights and privileges conferred by student status.
- 5.9 Restitution. The requirement that a student make payment to the University or to another person or group of persons, or to a student organization, for damage caused as a result of violation of this code.
- 5.10 Transcript Disciplinary Record. An entry onto the student's transcript, permanently or for a specified period of time indicating that the student has been found to have engaged in prohibited conduct, pursuant to Section 4.0 of the Student Code of Conduct. The entry shall also designate the sanction imposed.
- 5.11 Other Sanctions. Other sanctions may be imposed instead of, or in addition to, those specified above.
- 5.12 Among the factors that will be considered in the determination of what sanction is appropriate is whether there have been repeated or aggravated violations. Among the factors that may be considered in mitigation are whether the student has been straightforward, and taken responsibility for his/her acts; the nature of the offense and the severity of any damage, injury, or harm resulting from it; and the lack of past disciplinary record of the offender. Because a primary purpose of this code is to protect the University community, a claim that a violation was committed as a matter of "innocent fun" shall not be viewed as a factor in mitigation.
- 5.13 Attempts to commit acts prohibited by this code shall also be punishable.
- 5.14 Students who have left the University, and who, after leaving the University, have used forged University transcripts or other University documents, or have used University transcripts or other University documents with unauthorized alterations, may be subject to one or more of the following sanctions:
- a) The refusal to provide any further transcripts or other documents;
 - b) The refusal to provide any further transcripts or other documents except directly to institutions or employers;
 - c) The denial of any further enrollment;
 - d) An entry onto the student's transcript, permanently or for a specified period of time.

6.0 COMMUNICATION OF NOTICES TO STUDENTS: APPEALS AND APPEARANCES BY STUDENTS

Except as provided in Section 10.1, all notices to students which are provided for by this code shall be sent by first-class mail (not certified or registered) to the student's address filed by the student at the time of last registration. If the sender of the notice has actual knowledge that a different address is correct, the sender shall also send a copy to that address. Copies of written notices may also be hand-delivered to the student.

All written appeals or requests for review must be signed and submitted by the student herself/himself (not by an advisor or an attorney). Sections 15.9 and 14.3 of this statute provide, respectively, that any party may bring an advisor or an attorney to a formal hearing held pursuant to Section 15 of the statute, and that a student, or the representative of an intra-college

organization, may bring an advisor or attorney to an Informal Disciplinary Conference. These sections specify the role of the advisor or attorney at the hearing or conference. All appearances by the student except for Section 15 hearings and Section 14.3 conferences shall be by the student herself/himself except that the Student Conduct Officer may, in her/his discretion, permit the student to bring an advisor or attorney if, because of a language impediment, disability, or other special circumstance, the presence of an advisor or attorney would improve the quality of the fact-finding conference, and if the student notifies the Student Conduct Officer of the name of the advisor or attorney, and the reason the student desires the presence of an advisor or attorney, at least 48 hours prior to the conference. The Student Conduct Officer may revoke her/his permission for the presence of an advisor or attorney at any time if, in her/his judgment, it is not improving the quality of the conference.

7.0 INTERIM SUSPENSION

Whenever there is evidence that the continued presence of a student on University premises poses a substantial threat to that student or to others, or to the stability and continuance of normal University functions, the President, Provost or his/her designee, and after consultation with the Office of the General Counsel, may suspend the student for an interim period pursuant to these disciplinary procedures. In matters of academic misconduct, the Provost's designee will ordinarily be the student's Academic Dean; in matters of nonacademic misconduct, the Dean of Students. Notice of the interim suspension shall be mailed to the student. The interim suspension may be made immediately effective, without prior notice, and may provide for complete exclusion from University premises except for the appearance provided for in Section 7.1, which appearance may be scheduled to occur at the Public Safety headquarters.

- 7.1 A student suspended on an interim basis shall be given an opportunity to appear personally before the University officer who suspended the student, or before his/her designee, within five school days from the date of the interim suspension. Notice of the time and place of the appearance shall be included in the notice of suspension. The University officer shall hear the student regarding the following issues only:
- a) The reliability of the information concerning the student's conduct;
 - b) Whether the conduct and surrounding circumstances reasonably indicate that continued presence of the student on the campus poses a substantial threat to the student or to other individuals or to the stability and continuance of normal University functions.
- 7.2 Within two school days following the opportunity for an appearance provided for in Section 7.1, the suspending officer or his/her designee shall issue a written determination as to whether or not the suspension should continue, and whether a formal charge should be filed. The suspension may not be continued for more than ten school days after the determination unless a charge is filed within the ten school days.
- 7.3 The suspending officer or his/her designee shall, within the two school days referred to in Section 7.2, mail to the student a copy of the determination concerning the suspension.

8.0 HEARING COMMITTEE PANELS

- 8.1 Academic Misbehavior Committee Panels: At the beginning of each academic year, each college of the University, including the Graduate School, shall establish two standing panels, one of students, and another of faculty from the college. Each panel shall contain a minimum of eight and a maximum of twenty-four members. The faculty panel shall be selected by the faculty governing body within the college and the student panel shall be selected by the student governing body within the college. The respective governing bodies shall determine how large a panel, within these limits, is desired. If either governing body fails to act by October 15, the

Academic Dean shall determine the size of the panel and shall select the panelists. Vacancies occurring during the year which bring the size of the panel below eight shall be filled within one month of the vacancy's occurring by the appropriate faculty body or student body, or, if they fail to act, by the Academic Dean.

- 8.2 Non-Academic Misbehavior Committee Panels: The Academic Senate and the Student Council shall each establish a standing panel for the purpose of processing cases involving individual students or student organizations charged with non-academic misbehavior. Each panel shall contain a minimum of eight and a maximum of twenty four members. Appointees to the Committee Panel will normally serve for three years, unless the Academic Senate or the Student Council specifies a shorter term, except that student appointees will not continue to serve after they graduate. If the Student Council or Academic Senate fail to act by October 15, the Provost shall determine the size of the panel and shall select the panelists. A vacancy occurring during the year which brings the size of the panel below eight shall be filled within one month of the vacancy by the Student Council or the Academic Senate. If the Student Council or Academic Senate fail to act, the Provost then shall fill the vacancy.
- 8.3 The Dean of each college or his/her designee and the presidents of the Academic Senate and Student Council shall report the names of the panelists to the Provost and the Student Conduct Officer no later than October 20 of each academic year, and shall report vacancies and replacements to the Provost and the Student Conduct Officer as soon as they occur.

9.0 STUDENT CONDUCT OFFICER

The President of the University, or his/her designee, shall appoint an individual to act as Student Conduct Officer. The Student Conduct Officer shall direct and coordinate matters involving student discipline and shall be available to answer questions concerning the procedure to be followed in implementing this code. It is not the role of the Student Conduct Officer to be the proponent of any party.

The Student Conduct Officer shall maintain disciplinary files in the name of the student respondents. Except where litigation or administrative proceedings are pending regarding the matter, if a student is found not to be in violation of the charges his/her file shall be sealed, and after three years shall be destroyed. The files of students found in violation of any of the charges against them will be retained as a disciplinary record for the duration of time specified in the sanction, but no less than five years. If the sanction includes a Transcript Disciplinary Record pursuant to Section 5.10, disciplinary records shall be retained permanently if the transcript entry is permanent, or, if the entry is for a specified period of time, for five years after the end of that period. Disciplinary records may be retained for as long as litigation or administrative proceedings are pending regarding the matter.

The Student Conduct Officer shall keep a list of the hearing panels in all colleges and in the Academic Senate and Student Council, and shall report promptly to the Provost, and to the appropriate dean or president, any college or Academic Senate which does not have in place a current, complete panel.

The Student Conduct Officer shall prepare an annual report for the Board of Governors describing how this code has functioned during the year and, if the Student Conduct Officer believes changes are desirable, recommending those changes.

10.0 PRELIMINARY PROCEDURE

Any person may initiate charges against one or more students or a student organization believed to have violated this code, by filing charges with, and by providing information pertinent to the

case, to the Student Conduct Officer, both in writing. The charge must be made within a reasonable time after the alleged misconduct has occurred. The Student Conduct Officer will coordinate the adjudication of both academic and non-academic misbehavior violations of the Student Code of Conduct.

10.1 **Academic Misbehavior – Preliminary Procedure**

- a) When a faculty member is persuaded that academic misbehavior has occurred, the faculty member may, without filing a charge, adjust the grade downward (including downgrading to a failing grade) for the test, paper, or other course-related activity in question, or for the entire course. In such instances, the faculty member shall either orally notify the student (or each of the students, if more than one student is involved), in the presence of the department or unit head, of the downgrading and the reason(s) for it, or provide the notice by first-class mail as provided in Section 6.0, with a copy to the department or unit head. If the faculty member provides oral notice to the student, the faculty member shall provide the department or unit head with a written statement of the action taken. In any case, the faculty member shall provide the student with a copy of this Section 10.1 and a copy of the memorandum prepared by the Ombudsperson, explaining the Ombudsperson's role, referred to in Section 1.5. In the case of written notice, the copies shall be mailed with the notice. In the case of oral notice, the copies shall be hand-delivered to the student in person, or mailed, within five school days.

The student may appeal the action by filing with the department or unit head a statement in writing, within ten school days of oral notice or postmark of the written notice. The department or unit head shall give the student an opportunity to appear personally before him/her within fifteen school days of the postmark of the student's statement, and shall notify the student of her/his decision, in writing, within ten school days of the opportunity for an appearance. In a departmentalized college where the unit head is not the Academic Dean, the student may appeal to the Academic Dean, in writing, within ten school days of the postmark of the unit head's decision.

Where the department or unit head is the faculty member, then, in a departmentalized college where the unit head is not the Academic Dean, the student may appeal directly to the Academic Dean, in writing, within ten school days of the oral notice or postmark of the written notice, from the faculty member.

The Academic Dean shall notify the student of his/her decision within ten school days of the postmark of the student's appeal. The Academic Dean's decision shall be final.

Where the Academic Dean is the faculty member, the student may appeal directly to the Provost, in writing, within ten school days of the oral notice or postmark of the written notice from the faculty member.

- b) If the faculty member in whose course the alleged infraction occurred perceives it as warranting discipline in addition to that provided for in Section (a) the faculty member may also file academic misbehavior charges.

In the case of academic misbehavior charges against a student, the Student Conduct Officer shall forward a copy of the charges to the Dean of the college in which the student is enrolled. In the case of graduate students, this will be the subject-area college, not the Graduate School, unless there is no subject-area college. If the student is not enrolled in a college, the Student Conduct Officer shall forward the copy of the charges to the Dean of the College of Liberal Arts and Sciences. If the Student Conduct Officer determines that another college has primary concern with the matter, in which case

he/she shall assign the matter to that college, and forward the charges to the Dean of that college.

In the case of academic misbehavior charges against a student organization that the Student Conduct Officer finds is an intra-college student organization, the Student Conduct Officer shall forward a copy of the charges to the Dean of the college.

In the case of academic misbehavior charges against "related students," as defined in Section 13.2, if the students are enrolled in more than one college, the Student Conduct Officer shall determine which college has primary concern with the matter, shall assign the matter to that college, and shall forward the charges to the Dean of that college.

- c) The Provost or his/her designee may approve expedited due process procedures applicable to students enrolled in short-term, non-credit access programs, up to and including removal from the subject program.

10.2 **Non-Academic Misbehavior – Preliminary Procedure**

Charges of non-academic misbehavior made against students or student organizations will be adjudicated in the Dean of Students Office.

10.3 **Non-Academic Misbehavior – Housing and Residence Life**

Because of the special communal relationship of the residence hall living environment, University Housing may adjudicate and sanction students for minor policy infractions as proscribed in Housing handbooks, contracts, licenses, policies and regulations.

In order to maintain the consistency of Housing's administrative hearing process, the Student Conduct Officer or his or her designee shall meet regularly with the Director of Housing or his or her designee to review nonacademic misbehavior cases that occur within the Residence Halls.

The Director of Housing, or his or her designee, may, initiate non-academic misbehavior charges with the Student Conduct Officer at any time.

10.4 **Withdrawal of Charges**

In all cases, the charge may be withdrawn only by the charging party. It may be withdrawn at any time prior to the notice provided for in Section 11.7, but may not be withdrawn thereafter.

11.0 **FACT-FINDING PROCEDURES**

11.1 Upon receipt of the charges, the Student Conduct Officer shall initiate an investigation, which must include an opportunity for the student(s), or representative(s) of the student organization, to participate in a fact-finding conference with the Student Conduct Officer, and may include a conference by the Student Conduct Officer with the person making the charges, in order to determine whether further proceedings are appropriate.

11.2 A notice shall be sent to the student(s) or to representative(s) of the student organization, with a copy to the Dean of Students or the Academic Dean, within ten school days of the Student Conduct Officer's receipt of the charges, and at least five school days prior to the conference. The notice shall contain the following information:

- a) The alleged infraction;
- b) The nature of the evidence submitted;
- c) The time and place of the conference;
- d) A copy of this code, with a statement that it is the governing policy and that the student should retain it for use throughout the proceeding.

- 11.3 Should the student(s) or representative of the student organization fail to appear at the fact-finding conference or fail to inform the Student Conduct Officer that he/she is waiving his/her right to the fact-finding conference, the Student Conduct Officer may take action as described in section 11.5.
- 11.4 Upon request, the student(s), or representative of the student organization, and the charging party, may review the documents, statements, or other material in the Student Conduct Officer's case file.
- 11.5 Within ten school days following the fact-finding conference, the Student Conduct Officer shall decide:
- a) that no further action will be taken; or
 - b) in the case of academic misbehavior, charges made against student(s) or against a student organization that the Student Conduct Officer has determined, pursuant to section 10.1(b), to be an intra-college student organization, that the matter will be referred to the Dean of the college in which the student is enrolled or the student organization is based; or
 - c) in the case of academic misbehavior charges made against two or more students (called "related students" in this statute) where the students are enrolled in more than one college, that the matter will be referred to the Dean of the college with primary concern, as determined pursuant to section 10.1(b);
 - d) in the case of non-academic misbehavior charges made against a student(s) or against a student organization that the matter will be referred to the Dean of Students.
- 11.6 The Student Conduct Officer will notify in writing the student or representative of the student organization, the Academic Dean or the Dean of Students and the person bringing the charge, of his/her determination, within the ten school days specified in Section 11.5. If the Student Conduct Officer determines the case should be referred, the Student Conduct Officer shall forward the original file to the Academic Dean.
- 11.7 a) If the Student Conduct officer concludes that there is a sufficient basis to forward a charge for further proceedings, the Student Conduct Officer may, but need not, concurrently propose to the charged party a recommended disposition of the charge. If the Student Conduct Officer does so, he/she will advise the charged party in writing of the recommendation, that he/she has the option to accept or decline the recommendation and the consequence of accepting the recommendation. The recommended disposition will not be forwarded to the Dean of Students, but only to the charged party.
- b) The charged party may accept or decline the recommended disposition. If the charged party elects to accept the recommended disposition, he/she must do so in writing within ten school days. If the charged party accepts the recommended disposition, then the Student Conduct Officer will notify the Dean of Students of the disposition, and no further proceedings will be had. If the charged party declines the recommended disposition, then the matter will proceed as if no recommendation had been made.

12.0 PROCEDURE IN NON-ACADEMIC MISBEHAVIOR CASES

- 12.1 The Dean of Students shall notify the student that he/she may either meet with him/her in an Informal Disciplinary Conference pursuant to Section 14.0 of the Student Conduct Code or choose to have the decision and/or sanction of the Student Conduct Officer heard by a formal Hearing Committee convened by the Dean of Students pursuant to Section 15.0 of the Student Conduct Code. If the Dean of Students is the charging party, the Provost or his or her designee shall notify the student that he or she may either meet with him/her in an Informal Disciplinary Conference or if the student chooses, convene the formal Hearing Committee to review the case.

13.0 PROCEDURE IN ACADEMIC MISBEHAVIOR CASES

- 13.1 If, after reviewing the information transmitted by the Student Conduct Officer, the Academic Dean decides that further action shall be taken, and that the charges are sufficiently serious that it is possible that the alleged misconduct might result in a permanent disciplinary record, suspension or expulsion pursuant to sections 5.7, 5.8, 5.10 of this code, he/she shall initiate the Hearing Procedure, pursuant to Section 15. All other cases shall be resolved by an Informal Disciplinary Conference, pursuant to Section 14.
- 13.2 Charges against two or more related students arising out of the same or substantially overlapping sets of facts shall be heard together by the same Committee, pursuant to Section 15, or in the same Informal Disciplinary Conference procedure, pursuant to Section 14, unless the Academic Dean determines that separate hearings or procedures should be held.
- 13.3 If the Academic Dean has determined that further action shall be taken, he/she shall, in writing, so notify the student, or the intra-college student organization, within ten school days of receipt of the referral.

In cases where the Academic Dean has decided that the charges are sufficiently serious that the alleged misconduct might result in a permanent disciplinary record, or a suspension or expulsion pursuant to sections 5.7, 5.8, or 5.10 of this code, he/she shall notify the student (with a copy to the Student Conduct Officer) that the Hearing Procedure, pursuant to Section 15, has been initiated. In all other cases, the Academic Dean shall notify the student or the intra-college student organization (with a copy to the Student Conduct Officer) that the Informal Disciplinary Conference procedure, has been initiated. In hearing procedure cases, the Academic Dean's notice to the student shall include the statement that the student may elect instead to have the case resolved pursuant to the informal disciplinary conference provided for in Section 14, and that, in such cases, the full range of sanctions authorized by this code may be imposed, although the right of appeal specified in Section 16 shall not be applicable.

In the case of related students offered this choice, if any student desires a hearing procedure, all students will be afforded a hearing procedure in accordance with Section 15.

The Academic Dean shall advise the student to contact the Academic Dean's office within ten school days of the postmark of the Academic Dean's notice, in order to schedule the Informal Disciplinary Conference or the opportunity to strike names from the panels, as provided for in Section 15.2 (in hearing procedure cases). The Academic Dean shall forward the charges to the student and shall refer the student or organization to the copy of this code that has previously been provided.

- 13.4 If the student or a representative of the student organization does not respond to the Academic Deans within the time specified in Section 13.3, or if the student or representative fails to schedule the Informal Disciplinary Conference, or the opportunity to strike names from the panels, within fifteen school days of the postmark of the Academic Dean's notice, the Dean may decide the matter on the basis of the information provided by the Student Conduct Officer. If the Academic Dean sustains the charges the Dean shall decide the appropriate sanctions as specified in Section 5. The Academic Dean may take note of previously imposed sanctions when making his/her decision regarding sanctions. The Academic Dean shall notify the student or representative, the charging party, and the Student Conduct Officer of the decision, in writing. The decision of the Academic Dean shall be final. In those cases in which the nature of the sanction requires notice to the Registrar, the Student Conduct Officer shall forward the Academic Dean's notice to the Registrar.
- 13.5 Students referred to the hearing procedure may elect instead to have their case resolved pursuant to the informal disciplinary conference provided for in Section

- 13.6 In such cases, the full range of sanctions authorized by this code may be imposed, although the right of appeal specified in Section 16 shall not be applicable.

14.0 INFORMAL DISCIPLINARY CONFERENCE

Students or student organizations subject to, or electing to participate in, an Informal Disciplinary Conference before the Academic Dean or his/her designee or the Dean of Students shall be accorded the following procedure:

- 14.1 The student or representative of the student organization shall have access to the case file, prior to and during the conference.
- 14.2 The student or representative of the student organization shall have an opportunity to respond to the evidence and to call appropriate witnesses.
- 14.3 The student or representative shall have the right to be accompanied and assisted by an advisor or attorney only in the manner provided in Section 15.9 of this code.
- 14.4 The Dean shall render a decision within ten school days. If the Dean sustains the charges, the Dean shall decide the appropriate sanctions as specified in Section 5. The Dean shall notify the student or representative, the charging party, and the Student Conduct Officer of the decision, in writing, within ten school days. The decision of the Dean shall be final. The Dean shall, at this time, return the original file to the Student Conduct Officer. In those cases in which the nature of the sanction requires notice to the Registrar, the Student Conduct Officer shall forward the Dean's notice to the Registrar.

15.0 HEARING PROCEDURES

- 15.1 In general hearing procedure cases the hearing committee shall be convened either by the Academic Dean or the Dean of the Students. The committee shall consist of three faculty members and two students.
- 15.2 The student or related students may strike a maximum of two names from each panel, before the committee is drawn from the panels. If related students fail to agree as to the names (if any) to be stricken, then no names shall be struck.
- 15.3 In the first case of the year, the Dean shall begin with the first person remaining on each list after the student's opportunity to strike. Thereafter, the Dean shall begin with the first person who did not serve on the previous committee who remains on the lists after the opportunity to strike. The Dean shall proceed alphabetically through the lists until he/she has obtained three faculty and two student panelists who are able to serve. These five persons shall constitute the Committee. They shall elect the Committee Chairperson. The Dean shall brief the Committee regarding its responsibilities and regarding procedure under the statute. The Dean shall provide the Committee with necessary staff.
- 15.4 The Committee shall conduct a fair and impartial hearing.
- 15.5 The student shall be given notice of the hearing date at least five school days in advance of the hearing, and shall be accorded access to the case file, pursuant to Section 11.4, prior to and during the hearing.
- 15.6 The student and the charging party should be present at the hearing. If the student fails to appear, the hearing may proceed without him/her, and if the charging party fails to appear, the hearing may proceed without him/her.

- 15.7 Both the student and the charging party shall have the opportunity to be heard. The student may not be required to testify against herself/himself. Both the student and the charging party shall have the opportunity to question opposing witnesses.
- 15.8 The Dean may subpoena witnesses upon the request of either party or on his/her own motion. University students and employees are expected to comply with subpoenas issued pursuant to this procedure, unless compliance would result in significant and unavoidable personal hardship or substantial interference with normal University activities.
- 15.9 Any party may bring an advisor or an attorney to the Disciplinary Conference with the Dean or to the Hearing, provided that in order to be permitted to do so, the party must notify the Dean, in writing, of the name of the advisor or attorney at least 48 hours prior to the hearing. The role of the advisor or attorney during the hearing is solely to counsel and assist the party; the advisor or attorney may not participate actively in the conduct of the hearing.
- 15.10 The Chairperson may, in her/his discretion, permit participation by an interpreter or other assistant if, because of a language barrier, or impediment, or disability, or other special circumstance, such participation would improve the quality of the hearing. The Chairperson may revoke his/her permission of the participation by assist or interpreter at any time if, in his/her judgment, it is not improving the quality of the hearing. The party must notify the Academic Dean or the Dean of Students, in writing, of the request for an interpreter or assistant at least 48 hours prior to the hearing.
- 15.11 Hearings will be closed to the public, except that, in the discretion of the Chairperson, an open hearing may be held if requested by the student. In the case of related students, if any student in the group desires a closed hearing, the hearing shall be closed.
- 15.12 The Chairperson shall exercise control over the hearing to avoid needless consumption of time and to prevent the harassment or intimidation of witnesses. Any person, including the student, who disrupts a hearing or who fails to adhere to the rulings of the Chairperson may be excluded from the proceedings.
- 15.13 Hearings will normally be recorded. However, this code does not require that hearings be recorded, and the failure to record all or part of a hearing, or the technical inadequacy or loss of any recording made, does not invalidate the hearing or the procedure. Whether or not a recording is made, the decision must include a summary of the testimony, and shall be sufficiently detailed to permit review by the President or his/her designee.
- 15.14 The Chairperson may exclude witnesses other than the charging party and the charged party from the hearing during the testimony of other witnesses.
- 15.15 Formal rules of evidence shall not apply in disciplinary proceedings conducted pursuant to this code. The Chairperson shall admit all matters into evidence which reasonable persons would accept as having persuasive value in the conduct of their affairs. Unduly repetitious or irrelevant evidence may be excluded.
- 15.16 Affidavits shall not be admitted into evidence unless signed by the affiant and notarized, and shall not be admitted in any case unless the Chairperson finds that there is good cause to accept an affidavit instead of actual testimony.
- 15.17 The Committee may be advised by a representative of the Office of the General Counsel, except that if the Office of the General Counsel shall have acted in the case as proponent of any party, then the Committee shall be advised by independent, outside counsel.

- 15.18 A decision by the Committee that the charges are sustained must be based upon a preponderance of the evidence at the hearing. (A preponderance of the evidence is that which is sufficient to convince the Committee that it is more probable than not that the student's alleged misconduct occurred.)

16.0 HEARING BY THE COMMITTEE

The Academic Dean or his/her designee, or the Dean of Students shall convene the Committee within 15 school days of the student's response provided for in Section 13.3, except where the academic calendar makes a longer interval appropriate. The Dean or designee shall be present at the hearing but shall not be present during the Committee deliberations. A simple majority of the Committee members shall be present for the hearing. If a majority of the members are not present, the student may decide to proceed with the hearing before those members who are present, or to reschedule the meeting. In the case of related students, if 50% or more of the students prefer to proceed, the hearing shall proceed.

- 16.1 Within ten school days of the hearing, the Committee shall prepare and send to the Dean its decision, including a summary of the hearing and of its decision-making process. If the Committee sustains the charges, it shall recommend a sanction or sanctions.
- 16.2 If the Committee sustains the charges, then, within five school days, the Dean shall decide appropriate sanctions as specified in Section 5. The Dean may adopt the sanctions recommended by the Committee or may impose sanctions more or less severe than those recommended by the Committee. The Dean shall notify the student, the charging party, and the Student Conduct Officer of the decision and the sanction(s), in writing, within the five-school-day period. The Dean shall return the original file to the Student Conduct Officer. In those cases in which the nature of sanction(s) requires notice to the Registrar, Student Conduct Officer shall forward the dean's notice to the Registrar.

17.0 STUDENT ORGANIZATIONS

- 17.1 Any member of a group of related students can elect to have his or her charges heard separately from the rest of the group by making a written request to the Student Conduct Officer within five school days of receiving notice of the charges filed against the group. If a request is not made within five school days, the ability to have the case heard separately is waived. This section does not apply in cases of charges filed against student organizations.
- 17.2 A student organization and its officers may be held collectively or individually responsible when violations of this code by those associated with the organization have received the tacit or overt consent or encouragement of the organization or of the organization's leaders, officers, or spokespersons.
- 17.3 As a part of the decision in the case, the officers or leaders or any identifiable spokespersons for a student organization may be directed to take appropriate action designed to prevent or end violations of this code by the organization or by any persons associated with the organization who can reasonably be said to be acting in the organization's behalf. Failure to make reasonable efforts to comply with such a directive shall be considered a violation of this code both by the officers, leaders or spokespersons for the organization and by the organization itself.
- 17.4 Sanctions for organization misconduct may include revocation or denial of recognition, as well as other appropriate sanctions pursuant to Section 5 of this code.

18.0 APPEAL PROCESS

- 18.1 If as the result of a formal hearing process, a sanction is imposed the student or representative(s) of the organization may request the President or his/her designee to review the decision on the record. A written Request for Review must be signed and submitted by the student or representative himself/herself (not by an advisor or an attorney) to the Student Conduct Officer, with a copy to the Dean of the college, or the Dean of Students postmarked within twenty school days of the postmark of the college's final decision. The Student Conduct Officer will forward the appeal, with the record, to the President or his/her designee. Appellate review of the college's decision will proceed as soon as practicable after notification by the student of his/her wish to seek review.

The President or his/her designee may affirm, reverse or modify the decision or the sanction, or, in unusual circumstances, may send the matter back to the college. The President or his/her designee shall notify the student, the Dean, the charging party, and the Student Conduct Officer of the decision, in writing, within a reasonable time.

- 18.2 In individual cases (not organization cases), the student may also file with the President or his/her designee a Request for Postponement of the effect of the Dean's final decision. Such request must be postmarked within seven school days of the postmark of the Dean's final decision, and a copy must be sent to the Dean.

Upon receipt of a Request for Postponement, the President or his/her designee will immediately contact the Dean. Unless the college or the Dean of Students demonstrates that the injury to the college or University or to third persons that would result from a postponement would outweigh the injury to the student from denying the postponement, the effect of the decision rendered by the Dean will be postponed until the date that the President or his/her designee issues a decision regarding the underlying Request for Appellate Review.

The President or his/her designee will inform the student and the Dean of his/her decision regarding the Request for Postponement within three school days after receiving the request. Exceptions to this procedure may be granted by the President or his/her designee upon a showing of good and sufficient cause.

- 18.3. The decision of the President or his/her designee shall be final.

19.0 INHERENT AUTHORITY

The University reserves the right to take necessary and appropriate action to protect the safety and well-being of the campus community, including the right, in cases of a perceived threat of danger, to act to bar students from the campus without prior notice.

Amended by the Wayne State University Board of Governors, November 30, 2005.



DEGREE REQUIREMENTS

Candidates for the Bachelor of Science in Nursing must complete 121 credits in course work in accordance with the academic procedures of the University and the College. A student must complete the curriculum and program requirements, remove any marks of "I" or "Y", and be recommended by the faculty for the degree. The student must complete the required minimum number of credits, elect courses in the proper sequence in the appropriate curriculum and satisfy any course prerequisite or corequisite. Degrees are certified by the Office of Student Affairs as soon as possible after final grades have been posted.

Residency: The last thirty credits of the degree must be taken at Wayne State.

Grade Point Average: A student must maintain a grade point average of at least 2.00 in total residence credit and in all nursing courses.

APPLICATION FOR DEGREE

Applications for graduation must be submitted on-line no later than the fourth week of classes for the semester in which the students expect to complete the requirements for the degree, accompanied by the appropriate graduation fee. If, for whatever reason, one does not complete degree requirements, one must submit a new application for Degree and pay the graduation fee again. For instructions on this process go to www.commencement.wayne.edu. Degrees are awarded three times each year, May, August and December. All graduates attend the May or December graduation ceremony. Diplomas are sent by the University usually one to two months after the graduation date.

COMMENCEMENT

The commencement ceremony for all Wayne State University students occurs in May and December of each year. Information concerning commencement will be sent to graduates by the Commencement Office prior to the event. College of Nursing students are urged to attend their commencement ceremony to strengthen ties to the University and bring a sense of closure to their baccalaureate experience.

CONVOCATION

Convocation is a time for the College of Nursing to more personally acknowledge the achievements of the graduating students. The Convocation program includes a graduate and faculty march and individual introductions and congratulations.

COLLEGE OF NURSING PINS

Baccalaureate graduates of the College of Nursing may want to purchase a Nursing Pin from the University Bookstore. Convocation will include a pinning ceremony for all graduates with pins.

GRADUATION WITH DISTINCTION

There are 3 separate designations for scholastic excellence reflected in Wayne State's cumulative grade point average for students completing the baccalaureate degree: summa cum laude, magna cum laude, and cum laude. These designations reflect the top 20% of students in the College and are based on the grade point average distribution of the previous year's senior class.

The criteria for Graduation with Distinction include:

1. A minimum of 60 credits in residence at Wayne State University.
2. A qualifying minimum grade point average (calculated as explained above) in all work at Wayne State University which must be completed by the end of the semester of graduation. (For notation in the commencement program, the grade point average on all work completed prior to the semester of graduation will be used.) The grade point average needed for graduation with distinction will be posted by the Office of Student Affairs.



UNIVERSITY RESOURCES

The following is an alphabetical list of services available to Wayne State University students. Unless otherwise noted, these services are provided on a voluntary, non-cost basis. All University phone numbers begin with 577 or 993; from on-campus phones, dial 7 or 3 and the last four digits of the number.

Academic Success Center | Suite 1600 – Undergraduate Library | 577-3165

Free academic support is provided through group and individual tutoring, Supplemental Instruction, workshops, classes and individual meetings with professional Learning Specialists. If you are struggling in a course, stop by the Academic Success Center to learn more about free services.

www.success.wayne.edu

Athletics | Matthaei Physical Education Center | 577-4295

A diversified sports schedule provides college students and student athletes a wide choice of Intercollegiate, Intramural and Club Sports in which to participate.

www.wsuathletics.com

Campus Bookstore (Barnes & Noble) | 82 W. Warren Ave | 577-2436

The WSU bookstore sells new and used textbooks assigned in WSU courses as well as technical and reference books, special order books, school and office products, gift certificates, and university memorabilia. Used books are purchased by the bookstore throughout the term. Hours are 9 a.m.- 5:30 p.m. Monday through Friday except as posted.

www.bookstore.wayne.edu

Career Services | Suite 1001 – Faculty/Administration Bldg (FAB) | 577-3390

Career Services provides a variety of programs and services to assist students in attaining their career goals. Career Development services can assist students with career exploration and the decision-making process. Placement coordinators help students and alumni with their short-term and long-term employment goals. To help finance their education, students are able to find part-time jobs, either on or off campus, and full-time positions. This office also coordinates college work-study positions. Alumni may establish credential files or have resumes referred to employers who notify Career Services of job openings.

www.careerservices.wayne.edu

Cashier's Office | Suite 1100 – Academic Admin. Bldg / Room 217 – Welcome Center | 577-3650

The Office accepts registration deposits, tuition payments, loan repayments, fees for copies of transcripts and disburses all University checks, including payroll and financial aid checks. Hours are 9 a.m. to 6 p.m. Monday through Thursday, 9 a.m. to 5 p.m. on Friday.

www.wayne.edu/bursar/cashier/

Campus Health Center | Suite 115 - 5200 Anthony Wayne | 577-5041

The Campus Health Center (CHC) is a full-service primary care clinic that serves all currently enrolled Wayne State University (WSU) students.

www.health.wayne.edu

Computer & Information Technology (C&IT) | 577-4778

C&IT provides Wayne State students with a variety of services related to computing, including e-mail, Blackboard (course software), Academics (used for registration, financial aid, etc.), and more.

www.tech.wayne.edu

Counseling & Psychological Services (CAPS) | Room 552 – Student Center | 577-3398

This service provides students with special opportunities for consultation about needs or concerns for which individualized help is desired. Any facet of experience which affects a student’s educational progress may be explored with the professional counseling staff.

www.caps.wayne.edu

Dean of Students Office | Room 301 – Student Center | 577-1010

The Dean of Students Office is committed to providing opportunities to enhance the collegiate experience, develop leadership skills and celebrate Warrior pride. Our office invites you to discover over 400 recognized student organizations, including our Campus Activities Team and Greek Life. Pursue your interests, participate in diverse programming and make the most of your WSU experience.

www.doso.wayne.edu

Dining Services

Wayne State University offers a wide range of dining option ranging from traditional residential life style food courts with meal plans to chain restuarants like Starbucks and Panda Express.

www.wayne.campusdish.com

Educational Accessibility Services | Suite 1600 – Undergraduate Library | 577-1851

The Educational Accessibility Services Office is responsible for providing reasonable accommodations for students with disabilities on campus. Students can take advantage of consultation prior to University enrollment, priority registration, study rooms with adaptive equipment, alternative testing arrangements, scribes, interpreters, and information on community resources.

www.eas.wayne.edu

Office of Equal Opportunity | Room 4324 Faculty.Administrative Bldg (FAB) | 577-2280

Wayne State University is an equal opportunity/affirmative action institution and is committed to a policy of non-discrimination and equal opportunity in all of its operations, employment opportunities, educational programs and related activities. This policy embraces all persons regardless of race, color, sex, national origin, religion, age, sexual orientation, marital status or disability and expressly forbids sexual harassment and discrimination. Inquiries regarding equal opportunity and affirmative action policies or complaints may be directed to the Office of Equal Opportunity.

www.oeo.wayne.edu

Grosberg Religious Center | 6th Floor – Student Center

Promotes and facilitates interfaith cooperation among its various member organizations, and to enhance the religious aspects of community life on the Wayne State University campus.

www.grosberg.wayne.edu

Baptist Student Union	780 Student Center	577-3467
Newman Catholic Center	761 Student Center	577-3462
Episcopal/Lutheran Campus Ministry	687 Student Center	577-8305
Hillel Foundation of Metro Detroit	667 Student Center	577-3459
United Campus Christian Ministries	687 Student Center	577-3454

Religious Observances

Because of the extraordinary variety of religious affiliations of the University student body and staff, the Academic Calendar makes no provisions for religious holidays. However, it is University policy to respect the faith and religious obligations of the individual. Students with classes or examinations that conflict with their religious observances are expected to notify their instructors well in advance so that mutually agreeable alternatives may be worked out.

Housing & Residential Life | Room 582 – Student Center | 577-2116

More than 900 apartments are provided for university students, faculty and staff in six university-owned buildings on campus. Further information, including applications, descriptions and price information, may be obtained by calling or visiting the Housing Office.

www.housing.wayne.edu

Office of International Students and Scholars (OISS) | Room 416 – Welcome Center | 577-3422

OISS supports and enhances student's educational, cultural and social experiences. They collaborate with colleges, departments and the community to create and maintain an inclusive, global campus.

www.oiss.wayne.edu

Office of Multicultural Student Engagement (OMSE) | Room 791 – Student Center | 577-2312

The Office of Multicultural Student Engagement (OMSE) seeks to cultivate a safe campus environment where we value, promote, and celebrate identities among all students who engage with our office, while intentionally offering initiatives that positively address and impact retention and graduation rates of students that arrive at WSU underrepresented and at risk.

www.omse.wayne.edu

Ombuds Office | Room 790 – Student Center Bldg | 577-3487

The Office of the University Ombudsperson exists to assist students; faculty and staff in solving University related problems. This office can help students by providing information and advice, and by facilitating communication.

www.wayne.edu/ombuds

Parking and Transportation Services | Room 257 – Welcome Center | 577-2273

Responsible to provide well-maintained, safe parking facilities and transportation for employees, students and visitors. The present parking system is comprised of eight structures and 44 surface lots. The current capacity of parking spaces at Wayne State University is approximately 13,000.

www.parking.wayne.edu

Public Safety – Wayne State Police Department | 6050 Cass Ave | 577-2222

In case of emergency: dial 7-2222 at any of the many blue lights (mercury vapor) indicating an emergency phone or at any WSU phone. The department employs a force of 40 highly trained professionals who hold at least a baccalaureate degree and who serve the campus area around the clock. The Department also utilizes university students called Cadets who patrol the campus on foot during peak hours. Additional information about the Department of Public Safety is found on their web site. Any suspicious activity, losses or other incidents deserving police attention are to be reported to Public Safety at 577-2222.

www.police.wayne.edu

Recreation and Fitness Center, Mort Harris (RFC) | 5210 Gullen Mall | 577-2348

The Mort Harris Recreation and Fitness Center is a state-of-the-art facility conveniently located in the heart of campus. Highlights of the facility include a 30-foot-high climbing wall, two basketball/volleyball courts, and a 3-lane running/walking track. The center offers a variety of classes and programs. All currently registered students have a membership to the recreation center.

www.rfc.wayne.edu

Office of the Registrar | Welcome Center | 577-3541

Provide assistance in maintaining your academic record, registering for classes, or keeping you up to date with the most current information. You can also request official transcripts.

www.reg.wayne.edu

www.classschedule.wayne.edu

The South End – Student Newspaper | Room 369 – Student Center

The South End is WSU's official student-run campus newspaper. It accepts classified and display advertising as well as inserts. It provides news, sports, entertainment and special science and commentary sections in its daily publication. The paper is available free at over 40 locations on or near campus.

www.thesouthend.wayne.edu

Office of Student Financial Aid | Welcome Center | 577-3378

OSFA administers financial aid funds from federal, state, university and private sources. The funds help eligible students and their families pay the cost of attending Wayne State. To receive consideration for financial aid, complete the Free Application for Federal Student Aid (FAFSA) available in the OSFA lobby.

www.finaid.wayne.edu

Student Accounts Receivable | 4th Floor – Welcome Center | 577-3653

Accounts Receivable is responsible for addressing students' questions and concerns related to their student account activity and collecting outstanding tuition and/or loan balances. Fall/Winter hours are 8:30 a.m. to 6 p.m. Monday through Thursday, 8:30 a.m. to 5 p.m. on Friday.

www.wayne.edu/bursar/accounts-receivable

Student Center | 5221 Gullen Mall | 577-3444

The Student Center and Program Activities Offices, located in 351 Student Center, Gullen Mall offers many services to the campus community as well as opportunities for involvement in student life. There are approximately 200 student organizations including groups related to academics/professions, social action, politics, sororities/fraternities, ethnicity, and religion, as well as student governments. The Service Center houses the university Lost and Found, rents lockers, sells bus tickets and International Student ID Cards, and more. The lower level hosts a number of activities. Meeting rooms, fast food services, lounge space and ATM/banking services are available. Barnes and Noble operate a satellite convenience store on the main level.

www.studentcenter.wayne.edu

Student Printing/Copying/Scanning

Student printing and copying is available in multiple locations across campus, including libraries, labs and residence hall & apartment lobbies. This service is accessed by using money from a OneCard. Students can securely release documents directly to multifunction devices via built in touch screens or via the release stations on the single function devices.

www.onecard.wayne.edu/printing-copying

Testing, Evaluation, and Research Services | Room 686 – Student Center | 577-3400

Testing is provided to students for qualifying examinations for WSU course selection, proficiency examinations, test-out options for the University General Education Requirements, credit by examinations via the College Level Examination Program, and more.

www.testing.wayne.edu

Theatre & Dance at Wayne | Box Office – 4743 Cass Ave | 577-2972

The department of Theatre runs three theatres, The Hilberry, The Bonstelle, and a Studio Theatre that offer a wide range of performances throughout the year. The box office is located in the lobby of the Hilberry Theatre (Cass and Hancock) and prices for performances are reduced for students.

www.theatreanddanceatwayne.com

Transfer Student Success Center | Suite 3101 – 5057 Woodward Ave | 577-2487

Transfer students are successful here because we provide individualized service. We create and provide opportunities for transfer students to easily access information and assistance in transitioning to Wayne State.

www.wayne.edu/transfer

University Advising Center (UAC) | Suite 1600 – Undergraduate Library | 577-2680

The University Advising Center provides academic advising to students in the College of Liberal Arts, the College of Science, the College of Fine, Performing & Communication Arts, the College of Urban, Labor and Metropolitan Affairs, as well as students in many pre-majors, including Pre-Nursing. Call for an appointment or walk-in hours.

www.advising.wayne.edu

University Library System | www.library.wayne.edu

Offering a wide range of in-person and online solutions, University Libraries support the education, research and service missions of the University and its communities through comprehensive, high-quality resources, services and programs.

Arthur Neef Law Library

474 Gilmour Mall
577-3925

Purdy/Kresge Library

5265 Cass Ave
577-4042

Reuther Library

5401 Cass Ave
577-4024

Shiffman Medical Library

320 E. Canfield St
577-1088

Undergraduate Library

5150 Anthony Wayne
577-5121

Office of Military and Veterans Academic Excellence | Suite 687 – Student Center | 577-9180

This office assists veterans, eligible dependents/survivors, reservists and national guard members in obtaining educational benefits. Specifically, students are aided in applying for Federal benefits outlined under Title 38, U.S.C., including: the Montgomery G.I. Bill (chapter 30), the Reserve G.I. Bill (chapter 1606), V.E.A.P.(chapter 32), Vocational rehabilitation (chapter 31), and the Survivors'/Dependents' Educational Assistance (chapter 35). All eligible students must officially request to use their educational benefits each semester.

www.omvae.wayne.edu

WSU OneCard | Suite 257 – Welcome Center | 577-CARD (577-2273)

The OneCard is an all-in-one, multipurpose identification and debit card. It provides students, faculty, staff, alumni and recognized affiliates access to a wide variety of campus services in a convenient, easy-to-use card. A OneCard offers safety, convenience and flexibility. Cardholders can add money to their account, turning their OneCard into a campus-wide debit card. The card can be used for parking, door access, copying and printing services, as well as food and bookstore purchases.

www.onecard.wayne.edu

COLLEGE OF NURSING SERVICES

Financial Aid Distribution: Scholarships, Loan Repayment Programs, Traineeships, etc.

www.nursing.wayne.edu/students/financial.php

The College of Nursing administers a number of private scholarships and grants. Application for CON scholarships are reviewed annually and must be submitted (deadline TBD). Contact the Office of Student affairs for further information regarding scholarships and emergency loan applications.

The Financial Aid committee is made up of the Associate Dean of Academic and Clinical Affairs, the Assistant Dean of Enrollment and Student Services, the Directors of the PhD, DNP, MSN, and Undergraduate programs, the Development Director, Director of Business Affairs, and the Budget Analyst from the Dean's office. Final decisions are based on a variety of factors, specially the

student's scholastic progression, financial need and the relevant requirements of the funding mechanism. Guidelines specific to this policy are listed below:

1. Scholarships and loans are awarded to qualified incoming and continuing Nursing students on an annual basis at the CON.
2. Accurate and complete information on scholarships, loans and traineeships will be made available to all incoming and continuing Nursing students each year.
3. Scholarships and/or loans are awarded in compliance with applicable funding agencies' regulations/guidelines/criteria
4. The College's Financial Aid Committee is responsible for selecting scholarship, loan or traineeship recipients, with the most qualified applicants first. The two primary criteria are:
 - 1) ability to be successful (e.g. GPA) and 2) financial need as determined by the FAFSA.

Mailboxes

Mailboxes are provided in the Office of Student Affairs for BSN and MSN students, and student organizations of the College. Students are responsible for checking their mailboxes weekly for important notices.

Bulletin Boards

Bulletin boards throughout the College of Nursing are maintained to provide information to all nursing students.

Student Organizations

Nearly 170 groups representing a diversity of academic and professional fields, social and political concerns, recreation and student interests, are active on campus. Membership in a student organization provides an opportunity for self-development not always available in other areas of university life. Members learn leadership and organizational skills, meet new friends, and determine how to operate within the university governance system to effect change. The benefits can be real and long-lasting. What you learn as a participant today may influence your ability to be a responsible citizen in an ever-changing world.

The College of Nursing offers the following options for student involvement:

- **The College of Nursing Council (CNC)** is composed of elected student representatives from the College of Nursing Programs of students and faculty. Its purpose is to reflect the concerns of the student members to the University and the larger community.
- **The Student Nurses Association (SNA)** is a student-run group focused on providing educational, social and service opportunities to College of Nursing students.

College of Nursing Standing Committees

Undergraduate students may serve on the following College committees as a student representative. These committees are:

- Committee on Diversity
- Curriculum Committee
- Evaluation Committee
- Scholastics and Admissions Policy Committee (SPA)
- Student Faculty Advisory Committee

Committee on Diversity | This committee works closely with the Office of the Dean, Office of Student Affairs, and Curriculum Committee to support and maintain University goals related to culturally diverse faculty, student body, and educational content within the College of Nursing. This committee also supports the larger work of other groups and university committees which address cultural, racial, and gender issues. This committee offers 2 student representative opportunities: one graduate and one undergraduate student in good standing. For additional information contact, the Office of Student Affairs at 313-577-4082

Curriculum Committee | This committee is responsible for the design of both the undergraduate and Master's curricula in accordance with College of Nursing and University missions, and advises the Faculty Association on curricula. The committee also coordinates evaluation of curricula with the Evaluation Committee. This committee offers 2 student representative opportunities: one undergraduate and one graduate student in good standing. For additional information contact, the Office of Student Affairs at 313-577-4082

Evaluation Committee | Advises, plans, and coordinates processes for accreditation and reviews (external and internal). Sets the evaluation priorities for the CON toward achieving and maintaining the standard of excellence. Reviews data base systems for evaluations related to the CON, and designs new mechanisms for data collection if needed. Reports findings to faculty. This committee offers two student representative opportunities: one undergraduate and one graduate student in good standing. For additional information contact, the Office of Student Affairs at 313-577-4082

Scholastics Policy and Admissions Committee (SPA) | Reviews policies relative to admission, progression and graduation of students for undergraduate and master's students, making recommendations for revision as needed to the Faculty Association. Responds to requests from undergraduate or master's students for implementation of Academic Appeals Procedure. Serves in an advisory capacity to the Associate Dean for Academic and Clinical Affairs and/or Assistant Dean, Enrollment and Student Services concerning individual applicants or students as needed. This committee offers 2 student representative opportunities: one undergraduate and one master's student in good standing. Student representatives may not participate in review of individual applicants which is an additional function of this committee. For additional information contact, the Office of Student Affairs at 313-577-4082

Student/Faculty Advisory Committee | This committee serves as an advisory to the College of Nursing Council Governing Board. Also makes recommendations to Faculty Association and the Office of Student Affairs regarding CON convocation ceremonies and other relevant student/faculty events. Reviews existing student-centered and student/faculty activities and makes recommendations for identified needs for improvements if noted including new student orientation, student governance, and student interest and participation in the educational process. This committee offers opportunities for one student representative from each of the College of Nursing's undergraduate and graduate nursing programs (BSN, RN-BSN completion, CD2, Master's, PhD, and DNP, selected by the Governing Board of the College of Nursing Council (6 students). For additional information contact, the Office of Student Affairs at 313-577-4082

Additional Organizations

Students interested in serving on any of these committees should contact the president of the College of Nursing Council.

- **Chi Eta Phi Sorority, Inc.** | A national professional organization with a focus on African American nursing issues.
- **Sigma Theta Tau, International Honor Society of Nursing – Lambda Chapter** | Installed Lambda Chapter on the Wayne State University campus in 1953. Its purposes include recognition of superior scholastic achievement and leadership potential. Candidates for membership are elected annually from baccalaureate and graduate programs.