

# EPEC & EPEC-EM TRAINER CONFERENCE

Education in Palliative and End-of-Life Care (EPEC)  
&  
EPEC Emergency Medicine Trainer Conference

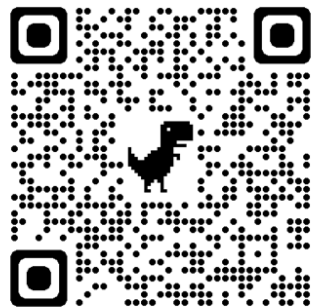
## Detroit, MI

May 1<sup>st</sup> and 2<sup>nd</sup>, 2025



Education in Palliative and End-of-Life Care®

Register for the EPEC or EPEC-EM  
Detroit Trainer Conference



Conference Sponsor



# WHY EPEC & EPEC-EM?

Join us for an engaging and insightful EPEC & EPEC-EM conference, designed to enhance palliative care practices across multiple clinical settings, including the emergency department, acute care, and beyond. Become a certified EPEC or EPEC-EM Trainer, equipped to implement and teach these essential competencies at your home institution.

The Education in Palliative & End-of-Life Care (EPEC) program, founded in 1999, has reached healthcare providers across the U.S. and more than 25 countries, training over 3,500 EPEC Trainers who continue to teach thousands of their colleagues. This interdisciplinary curriculum, written and continually updated by experts, is highly relevant to physicians, advanced practice providers, nurses, social workers, and others in specialties such as family medicine, internal medicine, general surgery, pediatrics, oncology, and critical care. The EPEC-EM Program is built upon a comprehensive, interdisciplinary palliative care curriculum written and continually updated by experts in the field. This course is specifically designed and directed for Emergency Medicine clinicians and educators.

Participants will gain practical training in communication, ethical decision-making, symptom management, and psychosocial care through a blend of didactic sessions, video presentations, case-based discussions, and hands-on exercises. Those attending these trainer conferences will also receive comprehensive teaching materials—including slides, videos, and detailed chapters—to help effectively educate and inspire others in delivering high-quality palliative care.

Both programs allows for hands-on practice to train in effective educational techniques to reach adult learners, including case-based teaching, role play, and interactive lectures. These courses are led by experienced palliative care, internal medicine, and emergency medicine faculty and maintains a very low faculty-to-participant ratio.

To Learn More About EPEC & EPEC-EM  
Visit The EPEC Webpage:

<https://www.bioethics.northwestern.edu/programs/epec/index.html>







## Become an EPEC Trainer Conference

The Education in Palliative & End-of-Life Care (EPEC) course provides healthcare professionals with essential training in communication, ethical decision-making, symptom management, and psychosocial care, making it relevant across specialties like family medicine, internal medicine, general surgery, critical care, pediatrics, oncology, and beyond. Through a combination of didactic sessions, video presentations, interactive discussions, and hands-on exercises, participants gain practical skills needed to effectively teach these competencies to others. Participants will receive electronic copies of slides, videos, teacher notes, and a comprehensive chapter on each topic covered.

### May 1<sup>st</sup>

#### 8:00 AM to 5:00 PM

- » Trajectories and Prognoses
- » Rapid Palliative Care Assessment
- » Goals of Care
- » Advance Care Planning
- » Caring for Hospice Patients
- » Psychosocial Aspects of Care
- » Withholding/Withdrawing Therapy
- » Family-witnessed Resuscitation
- » Breaking Bad News
- » Ethical and Legal Issues

### May 2<sup>nd</sup>

#### 8:00 AM to 5:00 PM

- » Common Symptoms
- » Chronic Pain
- » Malignant Pain
- » Complications of Cancer
- » Last Hours of Living
- » Teaching Palliative Care
- » Interactive Teaching
- » Role Playing
- » Case-based Teaching



### May 1<sup>st</sup> 6:00 PM to 8:00 PM – NETWORKING EVENT

» Optional Self Pay Dinner and Networking Event Set Up by Course Faculty at Local Restaurant. More Details to Follow.

## Become an EPEC-Emergency Medicine Trainer Conference

The 'Become an EPEC-EM Trainer' Conference is a specialized adaptation of the core EPEC curriculum tailored to address Palliative Care in the Emergency Department, emphasizing the skills needed to effectively teach these competencies to others. Participants will receive electronic copies of slides, videos, teacher notes, and a comprehensive chapter on each topic covered.

### May 1<sup>st</sup>

**8:00 AM to 5:00 PM**

- » Trajectories and Prognoses
- » Rapid Palliative Care Assessment
- » Goals of Care
- » Advance Care Planning
- » Caring for Hospice Patients
- » Psychosocial Aspects of Care
- » Withholding/Withdrawing Therapy
- » Family-witnessed Resuscitation
- » Breaking Bad News
- » Ethical and Legal Issues

### May 2<sup>nd</sup>

**8:00 AM to 5:00 PM**

- » Common Symptoms
- » Chronic Pain
- » Malignant Pain
- » Complications of Cancer
- » Last Hours of Living
- » Teaching Palliative Care in the ED
- » Interactive Teaching
- » Role Playing
- » Case-based Teaching

### May 1<sup>st</sup> 6:00 PM to 8:00 PM – NETWORKING EVENT

- » Optional Self Pay Dinner and Networking Event Set Up by Course Faculty at Local Restaurant. More Details to Follow.





# Wayne County Community College Downriver Campus

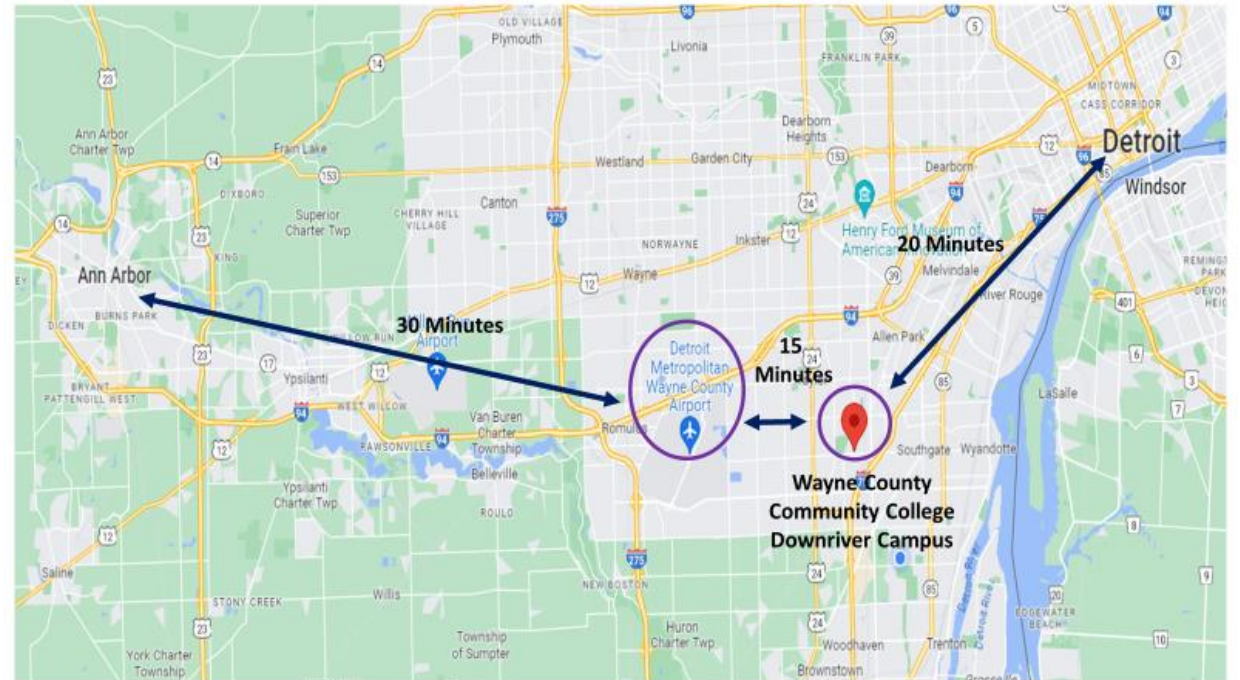
21000 Northline Road  
Taylor, MI, 48180



# EPEC & EPEC-EM Detroit Conference WCCC Downriver Campus

**Within 15 Minutes From Detroit Metro Airport  
Free & Accessible Parking**

**\$20 Lyft Ride From Airport or Downtown  
20 Minute Drive to Downtown Detroit, MI  
30 Minute Drive to Ann Arbor, MI**



# Introducing Our EPEC Master Facilitators

## Joshua Hauser, MD

Dr. Joshua Hauser, a distinguished leader in palliative care, holds the position of Associate Professor of Medicine and Medical Education at Northwestern University Feinberg School of Medicine, where he also directs the Palliative Medicine Fellowship. He serves as the Section Chief of Palliative Care at the Jesse Brown VA Medical Center in Chicago.

Educated at Harvard Medical School and board-certified in Internal Medicine and Hospice & Palliative Medicine by the American Board of Internal Medicine, Dr. Hauser has been committed to shaping the future of palliative care education. As the Director of the Education in Palliative and End-of-Life Care (EPEC) Program, he has significantly expanded its reach by adapting it for multiple medical specialties, including Emergency Medicine, Pediatrics, and Neurology, and extending its impact globally, with notable programs in Africa and India.

Dr. Hauser's academic endeavors are marked by his innovative teaching approaches in palliative care. He emphasizes the integration of spirituality and medical humanities, enhancing the depth and compassion of palliative care education. His scholarly work includes nearly 100 peer-reviewed publications, establishing him as a leading expert and researcher in primary palliative care. Recognized internationally as a skilled educator and speaker, Dr. Hauser's commitment to improving palliative care through education and his extensive experience make him a key advocate for the integration of palliative care principles across various medical fields and cultural contexts.



## Daniel Maison, MD

Dr. Daniel Maison, a distinguished figure in hospice and palliative medicine, serves as the Regional Medical Director for AccentCare. With over two decades of dedicated service in the field, he has been a full-time physician in hospice and palliative care since 2001. Dr. Maison is board certified in both Internal Medicine and Hospice and Palliative Medicine.

A respected leader and educator, Dr. Maison has been instrumental in shaping national standards and practices within his field. He is a Master Facilitator for the Education for Providers of End of Life Care (EPEC) and has served as a national mentor for new hospice and palliative care physicians for over a decade. His commitment to education is further evidenced by his role in chairing the national board review course for hospice and palliative physicians, which attracted over 1,000 participants.

Dr. Maison's scholarly contributions include numerous articles and keynote addresses. He has also been pivotal in the development of the National Hospice Medical Director Certification Examination, enhancing the professional standards of hospice medical directors.

His leadership is recognized through multiple national positions, including his tenure as chairman of the Strategic and Coordinating Committee for Membership and Communities at the American Academy of Hospice and Palliative Medicine (AAHPM), and his service as a Palliative Board Member for the National Hospice and Palliative Care Organization (NHPCO). Currently, he is in his third term on the board of directors for the Community Health Accreditation Program (CHAP). In 2013, he was recognized as a visionary in hospice and palliative care by the AAHPM.



# Introducing Our EPEC-EM Master Facilitators

## Tammie Quest, MD

Dr. Tammie E. Quest holds the esteemed Montgomery Chair in Palliative Medicine and serves as a Professor in the Department of Emergency Medicine and Palliative Medicine at Emory University. As the Director of the Emory Palliative Care Center, she plays a pivotal role in advancing palliative care initiatives.

With a distinguished career, Dr. Quest has made significant contributions to the field of palliative medicine. She has served as the Past President of the American Academy of Hospice and Palliative Medicine. She is renowned for her advocacy for early access to palliative medicine, particularly in the emergency department. Dr. Quest was instrumental in developing the curriculum for the Education in Palliative and End-of-Life Care for Emergency Medicine (EPEC-EM) program, which has had a profound impact on training healthcare professionals in emergency settings.

Dr. Quest's commitment to advancing palliative care extends to her research endeavors. She has secured multiple grants from the National Institutes of Health (NIH) and other prestigious foundations to support innovative projects in palliative care. Her research interests span various areas, including quality improvement, emergency medicine, HIV palliative care, spiritual-based decision making, and end-of-life care in assisted living settings.



## Paul DeSandre, DO

Dr. Paul L. DeSandre, DO, FACEP, FAAHPM, serves as the Chief of Palliative and Supportive Care at Grady Health System in Atlanta, GA. He previously held roles as the Program Director for the Hospice and Palliative Medicine Fellowship at Emory University School of Medicine and as the Associate Residency Director for Emergency Medicine at Beth Israel Medical Center in New York, NY.

Dr. DeSandre is dedicated to integrating Emergency Medicine and Hospice and Palliative Medicine to deliver comprehensive care across diverse healthcare settings. As an accomplished clinical research scientist, he has focused his scholarly contributions on the integration of palliative care into emergency medicine and the development of palliative EM milestones in ACGME EM residencies.



Recognized as a Master Facilitator in the NCI-sponsored Education in Palliative and End-of-Life Care-Emergency Medicine (EPEC-EM) Project, Dr. DeSandre plays a pivotal role in shaping education and training initiatives in this critical domain. Additionally, he contributes his expertise to the Task Force Developing New Exam Content in Hospice and Palliative Medicine for the American Board of Internal Medicine.



# Introducing Our EPEC & EPEC-EM Course Faculty



**Satheesh Gunaga, DO, FACEP**

Vice Chair of Emergency Medicine  
Hospice & Palliative Medicine Champion  
ED Research Director  
Henry Ford Wyandotte Hospital  
Envision Healthcare

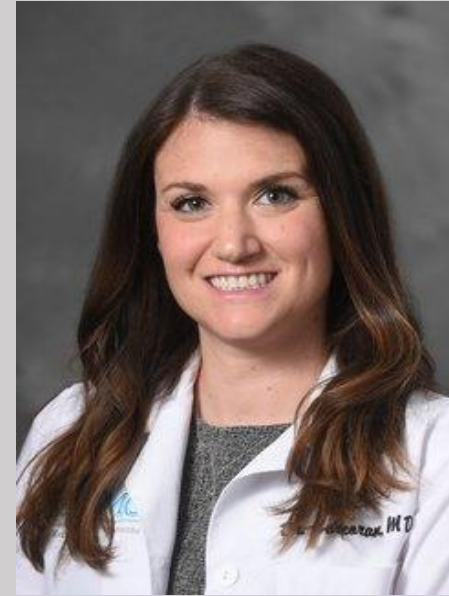
Assistant Clinical Professor  
Michigan State University  
College of Osteopathic Medicine



**Alyssa Buchheister, DO**

Senior Staff ED Physician  
Hospice & Palliative Medicine Champion  
EM & HPM Clinical Researcher  
Henry Ford Wyandotte Hospital  
Envision Healthcare

Assistant Clinical Professor  
Michigan State University  
College of Osteopathic Medicine



**Jessica Corcoran, MD**

Senior Staff ED Physician  
Hospice & Palliative Medicine Champion  
Henry Ford Wyandotte Hospital  
HPM Fellow, Detroit Medical Center  
Envision Healthcare

Assistant Clinical Professor  
Michigan State University  
College of Osteopathic Medicine



**Abe Al-Hage, DO**

Senior Staff ED Physician  
Hospice & Palliative Medicine Champion  
EM & HPM Clinical Researcher  
Henry Ford Wyandotte Hospital  
Envision Healthcare

Assistant Clinical Professor  
Michigan State University  
College of Osteopathic Medicine



## Conference Registration and Pricing

EPEC & EPEC-EM May 1<sup>st</sup> & 2<sup>nd</sup>, 2025

**Course Pricing Before April 1<sup>st</sup> --- \$795**

**Course Pricing After April 1<sup>st</sup> --- \$995**

To register for this conference, go to the registration QR Code or link below and complete the online registration form.

[Register for the EPEC or EPEC-EM Detroit Conference](https://form.jotform.com/240155101299147)



<https://form.jotform.com/240155101299147>

## Registration Details

Maximum Course Registrants: 50 Participants

**Verified Henry Ford Health & Michigan State University Health Sciences Employees are Eligible for a Discounted Registration Rate of \$695**

**Verified Envision Healthcare Employees are Eligible for a Discounted Registration Rate of \$595**

**Verified Residents or Fellows of any Specialty are Eligible for a Discounted Registration Rate of \$495**

For questions, please email us at:

**buchheis@gmail.com**

Conference fees include, breakfast and lunch each day, electronic copies of the slides and videos as well as teacher notes and chapters on each topic. This program is pending submission for physician and nursing CME.

Refunds minus a \$50 handling fee will be granted if requested prior to April 15<sup>th</sup>, 2025. Refunds unfortunately will not be given after this date.

# RECOMMENDED LODGING

## STAYBRIDGE SUITES SOUTHGATE

1.4 MILES FROM WCCC

[Staybridge Suites Website](#)

EPEC Course Discount

≈ \$134 / Night

Call 734-287-4200 & Use Code – “EPC”

Address: 12600 Reeck Rd, Southgate, MI 48195

Phone: 734-287-4200





# BECOME AN EPEC OR EPEC EMERGENCY MEDICINE TRAINER

## Thursday & Friday, May 1<sup>st</sup> and 2<sup>nd</sup>, 2025

### Detroit , Michigan

Register for the EPEC or EPEC-EM  
Detroit Trainer Conference



<https://form.jotform.com/240155101299147>

The 'Become an EPEC or EPEC-EM Trainer' Conferences equip healthcare professionals such as physicians, advanced practice providers, nurses, and social workers with essential training in communication, ethical decision-making, symptom management, and psychosocial care. This curriculum applies broadly across various specialties and disciplines including family medicine, emergency medicine, internal medicine, general surgery, critical care, pediatrics, and oncology. Participants will return to their home institutions with a complete teaching toolkit that includes electronic copies of PowerPoint slides, videos, teacher notes, and detailed chapters for each topic covered, enabling them to implement and teach high-quality palliative care practices.

To Learn More About the EPEC &  
EPEC-EM Trainer Conference  
Visit The EPEC Webpage:



<https://www.bioethics.northwestern.edu/programs/epec/index.html>



Education in Palliative and End-of-Life Care®